

Leduc Family Profile

Page 3

Drawing Olympians to Mount Washington

Page 12

2008 Mount Washington Special Events

Page 13

2007 Mount Washington Accommodation Guide

Page 14

WINTER 2008

SPRING 2009

December ~ June

Volume 19, #1

milehigh.ca

The Marmot

MILE HIGH NEWS ON MOUNT WASHINGTON

Inspiring Athletes for 30 Years!



Mount Washington Freestyle Club Mogul Challenge participants.

Mount Washington is celebrating it's 30th Anniversary.

And no one is happier than the various Ski Clubs at the Resort. Over these 30 years a generation of youth have been introduced to the recreational fun and sport of skiing, snowboarding and cross

country skiing.

Many of these have become Champions in their own right, winning National and International competitions, proudly bringing the medals back home.

In this issue of the Marmot we will feature the activities and achievements of the Mount Washington Ski Club, Freestyle

Club, and the VI Riders Snowboard Freestyle Club.

We've also put together an historic timeline of notable events that have taken place over the past 30 years that have paved the way for Mount Washington's success.

The future holds limitless possibilities for the Resort and the next generation of champions.



Published for your convenience by RICK GIBSON of Royal LePage in the Comox Valley • www.rickgibson.ca • rick@rickgibson.ca

If you are looking for more information, wish to advertise, or to submit information for future issues please contact us at 250-334-3124.



6 Runs Night Lit Run including the Stomping Ground Terrain Park
Beginner and Intermediate Terrain
Thursday to Saturday, December 11 - March 28
Plus Christmas and March Break

Alpine Night Skiing!



mount Washington
ALPINE RESORT



New for Winter 09! Nordic Night Skiing!

The Stadium and World Cup Sprint Loop are now Night Lit
for Skiing and Snowshoeing! Thursday to Saturday, Dec. 11 - March 28

Fondue & Snowshoe Tours ~ Friday & Saturday Nights

mountwashington.ca

News In Brief

Encompassing people, places and happenings at Mount Washington.

Mount Washington may be dormant in the fall, but the Marketing Department is far from it. **Marketing Director Karen Bonell has become a bit of a world traveler**, heading to the four corners of the earth for ski shows – well, Courtenay, Victoria, Vancouver, Calgary, Edmonton, Toronto, Melbourne and London, anyway!

Tobin Leopkey of Section 8 Snowsport Institute displayed at the ski shows in Melbourne, Australia and London, England and Sarah Nicholson of Tourism Mount Washington went to London as well.

Mount Washington Alpine Resort plans to offer a **Ski Shuttle from Courtenay to the Resort** with a second stop at the base of the mountain this winter. From Friday to Sunday, the shuttle would go up in the morning and down at the end of the day.

The shuttle would also operate in the evenings (Thursday through Saturday) to accommodate people wanting to take advantage of night skiing.

The shuttle is still subject to licencing approval, Resort Marketing Director Karen Bonell said. Smith Transportation will continue to offer bus service to Mount Washington from Victoria to Nanaimo.

Jessie Percival is back in his role of **Ski Patrol Supervisor** after recovering from a serious accident last year. Welcome back.

The Resort installed a **state-of-the-art telephone system**. However, don't count on hearing Lily Tomlin's "one ringy-dingy, two ringy-dingies" telephone operator skit anytime soon.

Joanna Fox, who served with Canadian Sport Centre Pacific, has left her post at PacificSport to start a new job with the Province of B.C. as Manager, Sport Marketing and Public Relations in the new Ministry of Healthy Living & Sport. Fox is known at Mount Washington through her work on the Vancouver Island Mountain Sport Society building project and athlete promotion program.

Mount Washington has received a **2010 weather station** at the top of the Sunrise chairlift, courtesy of Environment Canada. The weather station measures

the amount of snow that has accumulated on a daily basis.

Max Oudendag, former Special Events Co-ordinator at the Resort is now working with Phillips Brewery as their North Island Representative. Oudendag still lives in the Comox Valley.

By popular demand from the Resort Community, Tourism Mount Washington will be sponsoring a **Village Lighting Contest** this year with some great prizes to be won. Property and business owners are encouraged to get out the LED lights and decorate their chalets, balconies and buildings. This will help us create a spectacle of Christmas Lights for our visitors over the season.

RAV4 2009 THE CONFIDENCE TO HANDLE ANYTHING



RAV4 is an SUV built to outsmart most obstacles in your way - including the gas pump. Inside and out, Toyota designers made the RAV4 larger, putting ingenious utility into a sleek body. Then our engineers gave it a comfortable ride. It's all a powerful argument for why RAV4 is one SUV that can handle just about anything.

OFFICIAL VEHICLE SUPPLIER TO MOUNT WASHINGTON



www.toyota.ca

New Location: 444 Crown Isle Drive, Courtenay, BC
Toll Free: 1-800-915-9168 or 250-338-6761 • www.courtenaytoyota.com

RICE TOYOTA
COURTENAY



Leduc Family Profile

Mention a family dedicated to the Mount Washington Ski Club, and Normand and Cindy Leduc's names are bound to come up.

The Leducs have seen both their sons go through the Club's ski programs, and Mathieu, 18, is now competing with the B.C. Ski Team as a result of the coaching he received at Mount Washington Alpine Resort.

Both Normand and Cindy are quick to volunteer for anything the Club needs, and they're fixtures at Mount Washington Alpine Resort.

"Skiing's always been a big part of our lives," says Normand. "We both come from skiing families."

He and Cindy met while skiing on Kaprun, a glacier in Austria – Normand is from Montreal, Que. and Cindy is from Horseshoe Bay, B.C. Normand, a retired air traffic controller with the Canadian Air Force, was a ski instructor in Germany at the time. He and Cindy still keep up their instructor tickets, training for their professional development each year.

The Leducs first became involved with the Mount Washington Ski Club in 1992 when their older son David was six years old (Mathieu is four years younger). The family had moved to Comox in 1990 after Normand was posted to Canadian Forces Base Comox.

David "was an awesome racer," says Normand. "Then he went to the dark side, snowboarding." At 12 years old, David's ski racing career was over.

David is now 22 years old and busy with his new career as an air traffic controller at 3 Wing Bagotville.

Mathieu, 18, graduated from Highland Secondary School in Comox last spring and is spending his winter traveling with

the B.C. team. They were in Chile for two weeks in September and spent some time on technical training for the giant slalom and slalom in Colorado.

"Mathieu always loved racing," says Normand, adding that he began skiing when he was not quite two, and racing when he was five years old. "He would follow his big brother and want to race him all the time."

Mathieu has spent the past 10 years working on his goal of making the Canadian Olympic team. Normand says he is too young for the 2010 Winter Olympics that will be held at Whistler, B.C., "but maybe the next one. I told him the first gold medal he wins is mine."

Since David has moved on to other interests, Normand and Cindy devote as much time as they can to Mathieu's racing career.

This winter, Normand will spend nearly a month with Mathieu, volunteering at World Cup events in Lake Louise and Panorama Ski Resorts.

"I was on the road for a month before Christmas (in 2007)," says Normand. "It's to support (Mathieu). They need a lot of volunteers and I feel as a parent it's my duty to support that," he says.

Cindy only gets so much leave from her job with the air force (she is an electronics technician at 19 Wing Comox, working on the CP-140 Aurora aircraft), so she chooses a couple of races a year to attend.

"We like to watch all the racing, but when Mathieu is racing we like to watch the slalom because it's not so fast," says Normand.

THE INSIDE SCOOP

- 5 • Winter Driving, are you prepared?
- Mount Washington Historical Timeline
- 6 • Comox Valley Shop & Dine
- 10 • Mount Washington Ski Club
- 11 • IPC World Cup Returns
- Our Youth to Fulfil Olympic dreams
- 12 • VIMMS Update
- Olympic Teams coming to Train
- 13 • 2008/09 Mount Washington Events
- 14 • 2008/09 Accommodations Guide
- 16 • Mount Washington Village Map
- 17 • Mountain Representatives in Beijing
- Beaufort Heights Leads Construction
- 18 • Mount Washington Alpine Map
- 19 • Mount Washington Nordic Map
- 20 • Section 8 Snowboard Training
- 21 • 2nd Generation Marmots
- Born in the Wild
- 24 • Real Estate on Mount Washington



"We don't like to see Mathieu racing downhill on one foot. It's gut-wrenching."

Proud parents Normand and Cindy Leduc (shown above left) raised their two sons, David and Mathieu to become accomplished racers for the BC Ski Team. Mathieu's goal is to become a member of the Canadian Olympic team.

18 Hole, Par 72 Championship Course • Golf Academy & Driving Range • 4 1/2 Star Villa Accommodations • Timber Room Pub • Silverado Steakhouse • Pro & Retail Shop • Fitness Centre • Classic Car Museum • Conference Facilities • Real Estate Opportunities

Warm Up To Winter!

Starting from
\$129

* Per person per night, includes one night in a Jacuzzi Villa, a round of golf with a power cart and a \$25 food voucher per room.

After a round of golf or a day skiing Mount Washington warm up with your favourite drink in our restaurants; in your Jacuzzi tub for two or cuddled under a down duvet... whatever works for you!

Ask About Our Mount Washington Ski Packages!

Crown Isle

RESORT & GOLF COMMUNITY

www.crownisle.com

Book Today: 1-888-338-8439 or 250-703-5050 Courtenay, BC

* Per person, per night, based on double occupancy and availability. Valid Dec. 5/08 to March 31/09. Not including applicable taxes.



Freestyle Club Mogul Challenge Champions: Max Heard, Patrick Boucher, Ben Farout, Natasha Peggs, Cassie Sharpe and Emma Benischek

Freestyle Club Introduces Recreational Freestyle

Skiing isn't just about pointing the skis together and gliding effortlessly across the face of a run. It's also about the feeling of freedom one gets carving a fresh path through 40 centimetres of powder, a sunny, crisp day on the Outback – or catching air on the moguls course.

The Mount Washington Freestyle Club teaches kids the fun of freestyle while building lifelong skills.

"This year we're planning new program called recreational freestyle," says Gina Stubbs, who along with husband Simon runs the Club.

The recreational freestyle program is geared towards teens 13 to 17 years who haven't necessarily started a ski program at a younger age but would like to be doing freestyle stuff.

The program will take place half a day at a time over four weekends. Kids will get to try out the terrain park as well as ski the Outback. When they're finished, they'll be "all-terrain skiers", says Stubbs.

The Freestyle Club starts with a program called Jumps and Bumps. Skiers progress through each level, and can choose to race competitively.

The Development Program is for strong parallel skiers. "This is for kids that aren't quite ready for the competitive team yet, but have progressed past the Jumps and Bumps level," she says.

The development team doesn't travel to races as often as the competitive team does. The competitive racers also engage in dryland training, mogul camps, water ramp camps and summer camps. Where skiers in the development program can choose either one-day or two-day streams, the competitive team requires a two-day commitment every weekend.

The Club has about 50 members, including two, Andrea Bull of Campbell River (now living in Calgary) and Patrick Boucher of Courtenay, who are on the B.C. Provincial Freestyle Team.

There are also three athletes who are being courted by PacificSport, says Stubbs.



Peter Stubbs likes to get out for a little air now and then.

The Freestyle Club will hold an early season camp around Christmas, and this year will offer a "girls only" clinic on Feb. 20, 2009.

For more information on the Freestyle Club, go online to www.mwfc.ca. There are registration forms and an e-mail link for those wishing to sign up for programs.

New Mogul Site for the Freestyle Club

The Mount Washington Freestyle Club has been operating up at Mount Washington Alpine Resort for seven years, and this year hopes to become a permanent fixture with the creation of a mogul site.

The new site would be situated on the Lower Retirement Run, just below the Terrain Park, says Gina Stubbs.

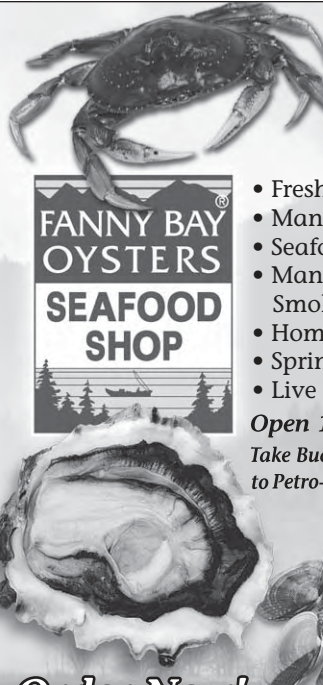
In March 2008 the Club hosted the B.C. Freestyle Championships, drawing competitive skiers from all over the Province. The event's success has spurred the Club into plans for the permanent site.

In the summer of 2009 the Club will do some clearing and some earth moving to prepare the site. "What we need to do is ensure the ground has the right pitch to it," Stubbs explains. They will set up a world-class FIS mogul site and a big air site.

"With the permanent mogul site, we will be able to host Provincial events more easily. Then we can look at hosting a Junior National," Stubbs says.

She says Resort staff is encouraging the project because a permanent mogul site could attract teams needing venues for Olympic training in 2010.

For now, the Club is busy securing community sponsorships to help offset costs. "This is a huge financial endeavour for the Club," says Stubbs.



Pick up some fresh Fanny Bay Oysters and so much more!




FANNY BAY OYSTERS SEAFOOD SHOP

- Fresh Qualicum Bay Scallops
- Manila Clams
- Seafood Quiches
- Many varieties of Smoked Salmon
- Home Made Chowders
- Spring Rolls • Sushi
- Live Crab

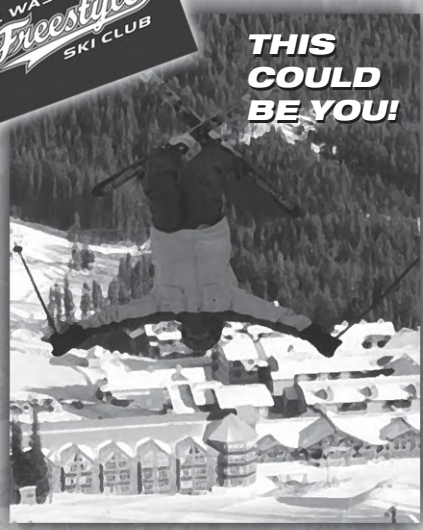
Open 10am ~ 6pm daily
Take Buckley Bay Exit 101 off Hwy. 19 to Petro-Can Denman Ferry Landing

Order Now!
Phone 250-335-1198 www.fannybayoysters.com


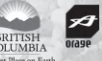

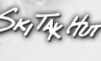



JOIN NOW YOU CAN DO IT

THIS COULD BE YOU!



PROGRAMS for SKIERS starting at Age 6
Visit our website: www.mwfc.ca



Welcome to Mount Washington Hostel

Courtenay's largest and most stylish budget hostel.




Jam Nights - Live Music - DJ's



- Free Wireless
- Group Discounts
- Linen Provided
- Dorm & Private Rooms

275 8th Street Courtenay BC V9N 1N4
T. 1.250.331.0945
F. 1.250.331.0946
Toll Free: 1.877.331.0945
www.mountwashingtonhostel.ca






Driving from Sea Level to Ski Level... Are you Prepared for Winter Driving?

You may leave home snow free, rest assured there is plenty on the road when driving up to Mount Washington.

Each winter, many Mount Washington Alpine Resort visitors have to call a tow truck. "Many of these calls could be avoided", says Bill Wright, owner of Georgia Strait Towing and Collision in Courtenay.

"The biggest reason people need to call a tow truck, says Wright, is because they're not prepared for winter driving. People go from summer conditions to winter conditions in half an hour," he says.

Drivers don't think about things like antifreeze, fuel lines freezing up or how their transmission is going to react. And forget about winter tires, many of the vehicles he tows don't have them, never mind chains.

"Nobody wants to pay the money to buy chains. Some think just because they have a four-wheel-drive they don't need chains. But four-wheel-drive isn't going to help going downhill," he says.

"Four-wheel-drive is the same as two-wheel-drive when you don't have good tires."

Mike Renouf, Security Supervisor at Mount Washington, routinely gets calls to help people who's cars have broken down, gotten stuck, or have locked their keys.

"Losing keys happens a lot," he says. "They put them in their jacket rather than in a locker, and when they wipe out the keys inevitably disappear."

"The most common (call) is people not getting their vehicle winterized," he says. That results in scenarios like low batteries that can't handle the cold or performance tires that don't perform well on snow.

The Resort does not allow overnight parking in any of its Day Lots. The Lots must be empty for snow clearing purposes. Any vehicles left overnight in the Day Lots have to be towed.

Renouf's final word of advice to people driving up to enjoy Mount Washington this winter is to make sure to have the correct tires for winter driving.

Conferences and Catering Push Summer 2008 over the Top



The First Annual Food Festival was a hit last summer.

The summer season continues to grow at Mount Washington Alpine Resort. "Tourism was up this year," Resort Marketing Director Karen Bonell said.

The weather co-operated this year, despite July being a bit cool. "It was a decent summer. That was a big help," she said.

"The whole move into catering and conference groups has definitely been our success this summer," she added.

Conferences brought guests from all over to the Resort regardless of the weather. Many of them turned their visits into mini getaways, and that translated into spin-offs for both the Resort's accommodation and food and beverage departments.

One area in particular that stood out was the number of seniors who visited the Resort late in the season, she said.

"This September we saw a lot more seniors come up. Part of that was the weather. I think the other part is they're not really tourists, per se. They're Vancouver Island seniors and if the weather's good

they get out and tour," Bonell said.

Rides on the Mile High chairlift went up 60 per cent in September, and she attributed that to the number of seniors that waited until kids were back in school before making their way up to the Resort.

The Resort stuck to the status quo for events this year, except for the Alpine Food Festival, which highlighted the diversity of Comox Valley and area culinary delights.

"We were really pleased with the first annual Food Festival. We're going to continue building that for next year." Almost 1,700 tasting tickets were sold for the marketplace on Saturday. Beyond the Kitchen Door has already committed to co-sponsor the event with the Resort next year.

"That's a key partnership. We're really happy they want to come back and do it again," Bonell said. The Event has already been scheduled for September 4-6, 2009, slightly earlier than this year.

Moving the Beer and Wine Festivals back to Raven Lodge was a hit, she added. People also loved the fact the Festivals were held on Friday nights.

Daily Ski Bus Service



To Mount Washington ~ 7 Days a week

From Victoria, Mill Bay, Duncan, Ladysmith, Nanaimo, Parksville, Qualicum Beach and Mount Washington's Base Parking Lot.

Please call for reservations.

Victoria: 250-382-2544 ~ Nanaimo: 250-756-2544 ~ Toll Free: 1-877-756-2544

25 YEARS OF SKI BUS EXPERIENCE!

Visit our web site for schedul and prices. www.smithtransportation.com



Ski Bus operated by
Smith Transportation Ltd.



**EATERY &
CATERING CO.**

Open 7 days a week for
Breakfast, Lunch & Dinner

Family restaurant featuring home-style cooking, kids' play area and full seniors' menu. Meeting and Banquet Room available. Large groups welcome.

www.platescatering.com

2601 Cliffe Avenue, Courtenay 250-334-8087



- Burton
- North Face
- Salomon
- Rossignol
- Helly Hansen
- Orage
- Dakine
- Columbia
- Oakley
- Nikita
- Ride
- 686

SKI TAK HUT

Your Ski and Snowboard Specialists since 1976

www.skidakhut.com • 267 sixth st, courtenay • 250-334-2537

RETAIL | RENTAL | REPAIRS



Eco-Friendly • Recycled Chic!

334-4676
308 Fifth Street Antiques, Etc.

2008/2009 SKI SPECIAL



Clean, Comfortable & Affordable
\$7500*

Rate per night, plus applicable taxes. Based on double occupancy in a Deluxe Room.

** Must reserve room in advance. Additional guest in room pays \$5 + taxes p/p. All rooms non-smoking. Offer valid from Dec. 15/08 through April 15/09.*

The Anco MOTEL

Only 30 minutes from Mount Washington Alpine Resort

Ph: 334-2451 • 1-877-393-2200 • www.ancomotelbc.com
1885 CLIFFE AVENUE, COURTENAY, BC V9N 2K9

ATLAS
cafe • bar

BREAKFAST LUNCH DINNER

250 338 9838

avenue
B I S T R O

2064 COMOX AVE • 250 890 9200

Stay&Play...
Shop&Dine!

Stay&Play... Shop&Dine!

Make sure you check out the COMOX VALLEY

as part of your visit to MOUNT WASHINGTON. Enjoy the rural charm and urban allure of the Comox Valley and discover first rate accommodations, dining, shopping and entertainment! From galleries and museums, to restaurants, shops, parks and attractions, the diverse communities of Comox, Courtenay, and Cumberland and have it all! The COMOX VALLEY is one of the few communities where, even in winter, you can explore the beaches, bike through rain forest trails, play a round of golf, or paddle the peaceful waters of Baynes Sound. Indoor options are plentiful too, and include luxuriating in a spa, enjoying live theatre, sampling our local cuisine, or exploring museums and art galleries. A visit to the COMOX VALLEY holds the promise of all this and more!

Looking for things to do in the COMOX VALLEY?

Check out www.discovercomoxvalley.com for a complete listing of events happening all throughout the Comox Valley or contact the friendly staff at the Comox Valley Visitor center 250-334-3234 or visitorinfo@comoxvalleychamber.com.

A GENTLER TIME, Antiques Etc. (Corner 5th & Duncan) Quality heirlooms & one-of-a-kind collectibles, specially handpicked for the store arrive daily ~ these include an eclectic mix of antique & vintage furniture, silver, crystal, china, lines, jewelry, books, etc. Eco-Friendly ~ Recycled Chic!

ANCO MOTEL 67 rooms, cable TV, DVD rentals, coin laundry and in-room coffee/tea, Conference room. Non-smoking and smoking units, kitchenettes and high speed Internet access rooms available. Close to restaurants, shopping, golf, fishing, hiking and only 30 minutes to Mount Washington. Toll Free: 1-877-393-2200 www.ancomotelbc.com or email ancocourtenay@shaw.ca

ATLAS CAFE is a global experience with a world of choices in the heart of downtown



The Comox Valley is blessed with an impressive assortment of restaurants featuring fresh local cuisine, seafood and ethnic options. What ever you crave you are sure to find it here!

Courtenay. **ATLAS** serves fresh and innovative cuisine for breakfast, lunch and dinner. Diners will appreciate the warm and inviting vibe, as it is a great place to meet the locals. We feature fresh desserts, espressos, fresh juices, kids menu and nightly specials. Takeout menu available.

AVENUE BISTRO is a fresh, relaxed space where friends, colleagues and neighbors gather, and where the eclectic energy of the community hums in unison with the locally sourced, internationally inspired fine food. Chef Aaron and this team create delicious cuisine in a refreshing setting to compliment the laid back vibrancy of the Comox Valley and the bounty it offers. Visit our website at www.avenuebistro.ca.

BEAUFORT VINEYARD AND ESTATE WINERY 1st Estate Winery in the Comox Valley! Come taste our international award-winning, handcrafted wines . . . or order online. Check out our website for our products, directions, opening hours, etc. www.beaufortwines.ca or ph. 250-338-1357. 5854 Pickering Road, Courtenay.

BILLY D'S PUB & BISTRO "HOME OF THE 55 MARTINIS" On 5th Street, downtown Courtenay. Come see why we are known for our huge nachos and appys, a variety of burgers, wraps and salads, and our famous marinated 6 oz. N.Y. steak sandwich. Mmmm, Mmm good! Come in as a customer ~ leave as a friend! Check out our entire menu at www.billydspub.com

Quality Printers of...
weekly and monthly newsprint publications, flyers, recreation brochures, newsletters, newspapers and magazines.

Distribution available through our community newspapers from Victoria to Port Hardy.

Call for a free estimate - Victoria: 250-727-2460 or Ladysmith: 250-245-0350

A Division of
Black Press
www.blackpress.ca



Mountains of Spectacular Specials Daily!
Kitchen open from 11 am ~ 10 pm!

Whether you're a 'Snow Enthusiast' or a 'Snow Bunny' Billy D's is the place for you to warm up, relax and enjoy!

T. 250-334-8811 268 ~ 5th Street, Downtown Courtenay
Check out our entire menu at www.billydspub.com

HOME OF THE 55 MARTINIS

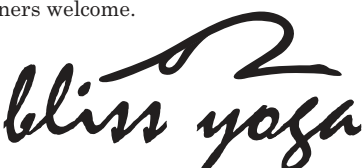
SKI to SEA



BLACKFIN
PUB at the MARINA

Oceanfront dining overlooking Comox Harbour
Reservations: 250.339.5030 | blackfinpub.com

hatha yoga & yin yoga
Gentle, peaceful mind/body work.
Drop-in and registered spaces available.
Beginners welcome.



bliss yoga
C u m b e r l a n d
250-336-8005 www.bhill.ca


Brian Scott
GALLERY

OPEN WEEKENDS • 11am ~ 4 pm
Tel: (250) 337-1941

8269 North Island Hwy., Black Creek, B.C.
Across from the Black Creek Store
www.brianscottfineart.com

Comox Air Force Museum

Located outside the entrance to CFB Comox
Ryan Road at Military Row, Comox
Open year round, 10 am-4 pm



www.comoxairforcemuseum.ca
Ph/Fax: (250) 339-8162

COMOX CENTRE MALL

Changing with the times to provide good times!

The Centre of your
*Community!*www.comoxmall.ca
215 Port Augusta Street, ComoxComox Valley Art Gallery
580 Duncan Avenue, Downtown Courtenay
250-338-6211 www.comoxvalleyartgallery.com

Gallery Gift Shop

Supporting local and regional artists. Unique gifts of
handcrafted pottery, wood, jewellery, fabric, and more.**Don't miss our 34th Annual Christmas Craft Fair,
November 14 to December 30, 2008.**

COURTENAY & DISTRICT MUSEUM



CULTURAL AND NATURAL HERITAGE OF THE COMOX VALLEY

Courtenay & District Museum
and Palaeontology Centre
Year Round Field Trips • Changing Exhibits
Children's ProgrammesPh: 250-334-0686 • 207 Fourth St., Courtenay, BC
www.courtenaymuseum.ca

* Just a 30 minute drive from Mount Washington *

* Superb Shopping *

* Delectable Dining *

* Exciting Entertainment *

DOWNTOWN
COURTENAY

www.downtowncourtenay.com

BLACKFIN PUB with its panoramic views overlooking the Comox harbour. Dine by the roaring fireplace, savour Fanny Bay oysters, wild salmon, and our signature dishes; Grilled Beef Tenderloin and Jack Daniels Baby Back Ribs. Global wines and 10 draught beers and ales are available.

BLISS YOGA Bring union to life. Learn to move the body gently and with awareness. Feel your senses tune in to experience the self.

Visitors praise the collection which covers a period from WW1 to current times. The second largest aviation library in Canada and a well stocked gift shop are also part of the attraction.

COMOX CENTRE MALL is conveniently located in the heart of Comox. Enjoy everything from eateries, fashion, gifts, beauty supplies, groceries, pharmacy and other general stores. Stop and enjoy the view of the Comox Wharf,

itage. Located in historic downtown Courtenay.
www.courtenaymuseum.com

Discover one of the most unique and vibrant downtowns on Vancouver Island! Just a 30 minute drive from Mount Washington, **DOWNTOWN COURTENAY** offers an eclectic mix of locally owned shops, entertainment, restaurants and services. From cozy bookshops to cutting-edge fashion, fresh flowers to artisan chocolates, antique treasurers to fossil discovery tours, **DOWNTOWN COURTENAY** has something for everyone, all in one convenient location. Add to this, a wide range of eateries, a fabulous museum and theatre, art galleries, parks, and more, and it's easy to see why **DOWNTOWN COURTENAY** is one of the most charming downtowns on the Island.

Cumberland's Funky Board shop, **FUSION BOARDWORX**, has a wide range of board sports products and accessories from Snowboards to Long board Skateboards. We offer Retail Sales and Service on most board products. We are an authorized Atomic and Santa Cruz Snowboard dealer as well as Rayne and Landyachtz Long boards.

We have many other interesting and cutting edge products in house. Check us out...
www.fusinboardworx.com

GEORGIA STRAIGHT TOWING & COLLISION has served the Comox Valley for over 30 years! BCAA, Roadside Assistance, ICBC Approved Towing. Professional service, recovery and towing; anytime, anywhere! Open 24 hours a day, 365 days a year.

GRAHAM'S JEWELERS is a family operated business, serving the Comox Valley for 38 years. At Graham's they offer fine jewellery, watches and giftware, such as Swiss Army, Tissot, Lampe Berger. All jewellery repair is done locally by a qualified goldsmith.



The Comox Valley is home to a large number of artists and artisans including painters, sculptors, print makers, potters and more. They are drawn here in part by the inspirational beauty. Their work can be seen and purchased in local art galleries and gift shops.

Life Flows, serigraph print by Neil Havers

Build strength in your core. Improve posture. Find balance and flexibility. Expand your range of motion. Om shanti.

BRIAN SCOTT an avid cross country skier on Mount Washington since 1980, translates his experience into vibrant, expressionist oil paintings. View his current showing at Raven Lodge and Deer Lodge, Mount Washington or drop by his Gallery in Black Creek. Ph. 250-337-1941 www.brianscottfineart.com

COMOX AIR FORCE MUSEUM An amazing collection of military and west coast aviation artifacts, aircraft and memorabilia awaits you.

the Beaufort Mountains and the seaside.
www.comoxmall.ca

COMOX VALLEY ART GALLERY exhibits Canadian and international contemporary art and promotes fine Arts & Crafts from local and regional artists. The Gallery Shop has a large selection of unique gifts for handcrafted pottery, prints, jewellery and more.

COURTENAY AND DISTRICT MUSEUM AND PALAEOLOGY CENTRE Explore 80 million years of history through active year-round programming and field trips a the Courtenay and District Museum ~ the Comox Valley's center for cultural and natural her-

Getting you
down the
mountain
SAFELY
for more
than 20 years!



Georgia Straight
COLLISION & TOWING
338-9899



• Fine Jewellery • Diamonds
• Watches • China • Crystal

"The Store with the Clock"

261 5th St., Courtenay • 334-4523



THE GREAT ESCAPE
Modern Indian Food

Licensed
Dinner Tuesday to Sunday
250 336-8831



2744 Dunsmuir Ave. Cumberland
www.greatescape-cumberland.com

Dining in casual elegance
Experience the bounty...



Food from the Heart of the Island

368- 8th Street, Courtenay Tel. 250-338-6493

www.localscomoxvalley.com



2732 Dunsmuir Ave.
Cumberland
250-336-2000

Magnolia
Gallery & Garden

For That Unique Gift

- Gallery Stained Glass
- Willow Tree Angels
- Jim Shore Figurines
- Sarah's Angels

Peppermint
Pig Bank

JACOB'S WELL

274A-5th Street • 250-334-2556

COURTENAY





martines
BISTRO COMOX

Live Music on Sundays • Open every evening at 5pm

339-1199 www.martinesbistro.com
1754 Beaufort Avenue

Mid Island Gifts

Featuring
Local Artists
& Products



Open Daily 9:00am - 7:00pm
at the Comox Airport
250-339-0332
www.midislandgifts.com

MONTE CHRISTO
on the River
RESTAURANT

Join us for lunch or dinner in our
beautiful setting on the river!



250-338-1468
975 Comox Road • Courtenay BC

A Unique Boutique...



PENNY
TYME
FASHIONS

*with the best
in comfortable,
quality clothing.*

*Conveniently located
in downtown
Courtenay.*

442-D Duncan Ave., Courtenay Tel: 250-334-2447

THE GREAT ESCAPE ~ Innovative and traditional Indian dishes in a unique venue. Our guiding principles: fresh, local, organic! Licensed. Open for dinner Tues. to Sun., 2744 Dunsmuir Ave. in Cumberland. www.greatescape-cumberland.com

JACOB'S WELL is known in the Comox Valley for its selection of Christian books and music as well as its gift selection to celebrate any occasion or to enhance any home decor. Whether it is stained glass, Jim Shore figurines or some extra-ordinary souvenir items you're looking for, Jacob's Well is conveniently located on 5th Street in downtown Courtenay and is open 6 days a week 9am to 6pm.

LOCALS ~ Food from the Heart of the Island. "LOCALS" showcases the best in food the Comox Valley and Vancouver Island have to offer. Chef Ronald St. Pierre's passion lies in providing memorable dining experiences that marry the bounty of the island with his culinary artistry, served in a unique dining setting with heartfelt service. We celebrate the uniqueness of Vancouver Island as everyone who works at LOCALS is passionate about life in the Comox Valley. Open Tuesday thru Saturday for lunch and dinner, 11 a.m. To 9 p.m. Reservations recommended at 250-338-6493 www.localscumoxvalley.com

MAGNOLIA FINE ART GALLERY features quality works of art by island artists ~ original paintings, sculptures, jewellery, metalwork, garden décor, and other beautiful pieces for collecting or gift giving. Open Tuesday to Saturday 10:30 a.m. to 5 p.m. Corner of 3rd and Dunsmuir, in the historic Village of Cumberland. www.magnoliagallery.ca

Dine well at **MARTINE'S** which is recommended by "Vancouver's Eating & Drinking guide". MARTINE's is located a block from Comox Marina. The menu features fresh flavors of West Coast seafood and enticing meat

dishes; all served with international flair. The warm ambiance is inviting, the staff convivial, and the decor comfortably stylish. Indulge in good wines and fun martinis. Open at 5 p.m., 7 nights a week with live music for your pleasure on Sundays.

MID ISLAND GIFTS ~ Great ideas for your home, friends or family, showcasing a wide variety of local artists, crafts and products. Unique, affordable gifts and travel necessities, all in one place, including a selection of 2010 merchandise. Open 9 a.m. ~ 7 p.m. daily at the Comox Valley Airport.

MONTE CHRISTO ON THE RIVER RESTAURANT offers a casual lunch with daily specials and homemade soups. Our dinner menu specializes in our exclusive mouth watering Alberta prime beef, as well as seafood, Greek food, pasta, BBQ dishes, chicken and a large selection of senior and children's dishes.

Discover the ultimate in relaxed comfort at **PENNY TYME FASHIONS**. Featuring the latest Sandwich, Tommy Bahama, Ribkoff, Jackpot, Sympli and many more fashions from Canada and Europe. Make time for PENNY TYME FASHIONS - your FIRST stop for affordable, quality, timeless fashions!

THE PIER PUB AND BISTRO ~ 'Pier Over the Edge' at waterfront dining at it's best. The combination of great "melt in your mouth" cuisine, and our unbelievable view of Comox Bay, is sure to make your experience one to remember. Warm and friendly staff will greet you daily for lunch and dinner.

Better Choices ~ Better Future. Explore, experience and get active at the **COMOX VALLEY REGIONAL DISTRICT RECREATION CENTRES**. Programs and services are available for infants through to seniors



Photo: Tony Radomi, courtesy Mount Washington

and are offered at a variety of venues, including the Comox Valley Sports and Aquatic Centres. Log onto www.comoxvalleyrd.ca for details and facility schedules.

THE RIDING FOOL HOSTEL is a Tourism B.C. Approved heritage property in historic downtown Cumberland. We offer private rooms and dorm style accommodation, full kitchen and BBQ, large common area wood stove and pool table, gear storage, free internet terminal and wireless signal. "Best hostel on Vancouver Island" Lonely Planet B.C.

ROAD RUNNER CAFE ~ where "Breaky is always being served" We serve excellent old fashioned, home style food. 7 a.m. - 8 a.m. Breaky special \$5.25. Daily lunch specials. Kids menu available. 1190 Cliffe Avenue, in the Comox Valley Inn & Suites, downtown Courtenay. Mentioning this ad gives you 10% off (specials exempt).

Feeling romantic? Visit **THE ROMANCE SHOP** on Cliffe Avenue, near 5th Street, Courtenay. This is where romantics of all ages shop. Finest quality massage oils, personal lubricants and sexy lingerie (XS - 4XL). Browse through the amazing and fun toy department. Their knowledgeable female edu-

Mount Washington is famous as a biking destination in the summer and so is the comox Valley... year round. Local shops can fill you in on the mountain trails in and around Cumberland as seaside trails in the regional parks.

cators will help you choose a product that will make you smile. They are the Romance Experts and Home Party Specialists! Stores in Victoria, Duncan & Courtenay. www.theromanceshop.org.

SHANTZ HAUS HOSTEL, a boutique hostel located in the heart of downtown Courtenay, will change the way you think about hostels. We offer you a comfortable home away from home, a cozy space with all the warmth and hospitality of a B&B combined with the friendly camaraderie and affordability of a hostel. Amenities include a fully equipped kitchen and cozy common room, free internet wireless internet, barbeque and parking.

THAI VILLAGE RESTAURANT ~ a tasty way to end a beautiful day. Relax and savour the fresh, healthy and exotic flavours of traditional Thai cuisine, famous around the world! Winter hours, Dinner starts at 4 p.m., Closed Monday.

**Stay&Play...
Shop&Dine!**



Waterfront
DINING in a relaxed atmosphere.



1805 Beaufort Ave., Comox
250-339-7083

THE PIER
PUB & BISTRO

Come Meet Us at The Pier!

Welcome to the Comox Valley!

SPORTS CENTRE
3001 Vanier Drive, Courtenay

AQUATIC CENTRE
377 Lerwick Road, Courtenay

For information phone 334-9622



RIDING FOOL
HOSTEL
CUMBERLAND BC



★ Tourism BC Approved ★

Accommodation and Lift Pass from \$80

1-888-313-3665 www.ridingfool.com

HONEST FOOD ~ GREAT PRICES
Across from Husky



ROAD RUNNER
CAFE

**10% Off Breakfast
or Lunch** with this coupon. ✂

1190 Cliffe Ave, Courtenay 250-897-7471



*Finest quality lingerie,
pleasure toys & lubes for
your Alpine Getaway
at Mount Washington.*

The Romance Shop

Courtenay • 589 Cliffe Avenue • 250-338-0669
Victoria • 2018 Douglas Street • 250-380-0069
Duncan • 80b Trunk Road • 250-715-1269
www.theromanceshop.org • 1-866-488-0069

WOMEN OWNED & OPERATED



Skiing • Boarding
Hiking • Kayaking
Biking •
Arts & Culture

Accommodations starting at
\$23 Per Night

1-866-603-2060 or 250-703-2060
www.shantzhospital.com
520 5th Street, Courtenay
YOUR ISLAND ADVENTURE LOCATION



THAI VILLAGE RESTAURANT

Tel: (250) 334-3812
2104 Cliffe Avenue, Courtenay

timeless

SNOW & SK8

YOUR BOARD SPORTS DESTINATION



307D 14th Street, Courtenay.
250-338-8436
www.timeless-snowsk8.com



The local waters just north of the Comox Valley offer exciting adventures like grizzly bear and whale watching, cruising around the islands and salmon fishing. Talk to local hoteliers for adventure oackages that are available year round.



Photo courtesy Crown Isle Resort & Golf Community

At **TIMELESS**, our passion is in board sports. Whether it's Snowboarding, Skateboarding or Skimboarding, it's the same feeling. Every brand at TIMELESS is rider inspired/driven to be the best stuff worn and performed by some of the highest level of athletes in the industry, from skate shoes to snowboard bindings, the precedent is set. So when you come in to see us, you will be sure to be greeted with a smile and receive quality service only found at TIMELESS.

TITA'S MEXICAN RESTAURANT Gourmet Mexican cuisine inspired by the freshest local produce and seafood. Incredible fresh fruit margaritas. Warm, friendly service, two cozy fireplaces. Mexican hot chocolate. Healthy kid's menu. Open every night at 4 p.m.

TOMATO TOMATO A contemporary riverside bistro located in the Old House in Courtenay. Chef Drew Noble has designed a FEAST of platters for a minimum of 8 people, with 24 hour notice.

TOSCANOS serves upscale Italian cuisine ~ Harbourside in Comox. The best veal and pastas, and other gastronomic delicacies ~ loving-

ly prepared by Bill. Did we mention the mouthwatering desserts? Casual dining for family and friends, with weekly specials.

TULIO'S CASITA offers Fine Dining with a Mediterranean flavour. Family owned and operated, TULIO's has been serving the Comox Valley for over 25 years. To enjoy their specialties of Steak, Schnitzel, Seafood or Lamb at your favourite table, call your Host, Teresa at 338-6031 for a reservation. Open for dinner Tuesday to Saturday, 625 Cliffe Avenue - at 6th in beautiful downtown Courtenay.

UNION STREET GRILL AND GROTTTO THE GRILL is a full service restaurant open for lunch and dinner, seven days a week with Weekend Breakfast on Saturdays and Sundays. THE GROTTTO is a licensed cafe open for breakfast, lunch & dinner, seven days a week, featuring grilled sandwiches, wraps, tapas and live music every Friday night. Eat to a different beat at Union Street.

VALHALLA PURE OUTFITTERS are Canada's "MOUNTAIN SPORTS" Specialists! They have the BEST Gear from the BEST Brands at the

Year Round Golf

makes the Comox Valley a popular destination which is home to 3-18 hole and 2 9-hole courses. Crown Isle (shown above) and Glacier Greens are well drained and great places to enjoy a round in the winter months. Another 10 courses are located within an hour's drive of the Comox Valley, making it your North Vancouver Island golf mecca.

BEST Prices - Guaranteed! They feature an amazing selection of outdoor clothing, footwear, backpacks, climbing equipment and travel accessories and now telemark and alpine ski touring gear. VALHALLA PURE OUTFITTERS... for the adventure! All locations open every day. Let it snow!

WHISTLE STOP PUB serves excellent pub food prepared by Master Chef Wayne St. Croix. Ocean view dining, two patios, Valley's best draft selection, plus friendly, knowledgeable staff. Live music every weekend & Sunday night jams.

Stay&Play... Shop&Dine!

Eat

to a different beat



**Union Street
GRILL & GROTTTO**

(250) 897 0081
5th Street, Courtenay
www.unionstreetgrill.ca

VALHALLA PURE

OUTFITTERS
... for the adventure!

This is our backyard!



We've got your gear!

334-3963
1-888-551-1860

www.vpo.ca 219 Fifth Street, Courtenay Open Daily

BACKPACK • CLIMB RACE • TRAVEL • SKI



**WHISTLE STOP
PUB**

Live music every Weekend
& Sunday Night Jams
Outdoor Decks ~ Best "Pub Grub" in the Valley
Open Daily: 9am-2am
Liquor Store: 9am-11pm
2355 Mansfield Drive, Courtenay, BC 250-334-4500

"Love in every bite"

TITA'S

Mexican Restaurant



♥ Fresh Local
Seafood & Produce www.tita.ca

Open Everyday at 4pm

536 6th St., Courtenay 250-334-8033



**TOMATO
TOMATO**
THE RESTAURANT

reserve a FEAST for 8

TOMATO TOMATO shares three acres along the Courtenay River with the Old House Village.
1760 Riverside Lane, Courtenay 338-5406
www.tomatotomato.ca

Toscanos

FINE
ITALIAN
CUISINE

Short stroll to Comox Marina
Open for Lunch & Dinner
Your hosts: Wendy & Bill Meade
Reservations Recommended (for 6 or more)
Tel: 250-890-7575
140 Port Augusta, Comox

Tulio's Casita Ltd.

Fine Cuisine
Steaks - Seafood - Schnitzel
Fully Licensed Dining Room



Reservations Recommended
338-6031
8-625 Cliffe Avenue,
Courtenay, BC



The Mount Washington Ski Club is celebrating 28 years of experience in developing youth this winter.

The Ski Club offers both a development and a competitive team – the development part coming courtesy of the Nancy Greene Program.

"It's an amazing program," says Juvenile/Junior Racing Co-ordinator John Trimmer. "We have all professional coaches that work for us in a range of levels and abilities."

The Nancy Greene Program is for kids five to 10 years old that already have some skiing ability and can load the chairlifts by themselves.

The Nancy Greene Ski League was created in 1968 after the Canadian skier's World Cup and Winter Olympic victories inspired hundreds of children to learn how to ski. Greene's philosophy that chil-

dren's competition should promote participation and fun, and de-emphasize winning, has stood the test of time across the country, and especially at the Mount Washington's Ski Club.

"We do understand as a club that not all children are going to be competitive," says Trimmer.

The program at Mount Washington teaches kids to be safe on the mountain and to be strong skiers anywhere on the mountain, he adds.

The Club's goal "is to give the kids as good a foundation as we possibly can" so they will enjoy the sport of skiing throughout the years.

Aside from the Nancy Greene program, the Mount Washington Ski Club has juvenile and junior racing programs, from Kinder 1 and 2 through to J-1 and J-2. Racers compete in zone races as well as Provincial races.

Continued on Page 23

Uphill for 30 Years!

As Mount Washington prepares a celebration for its 30th anniversary, the Marmot offers a timeline of major developments at the mountain since Alex Linton and Henry Norie first conceptualized a ski resort on the mountain.



Day Lodge construction in 1978

1976 Plans for the development began with Alex Linton and Henry Norie, two Vancouver Island businessmen.

1977 Construction begins, Paul Mathews of Ecosign creates a master plan for future development of the site. Mount Washington was the first planned ski resort in B.C. - Blackcomb the 2nd!

1978 Peter Gibson is hired part-time to work on the ski trail layout; physical work such as marking ski trails and cutting trees begins.

1979 The first lots for Strata 799 (the Alpine Village) went on sale in the summer of 1979, and sold out within three hours.

1979 Peter Gibson is hired full time.

1979 Alpine Lodge is constructed, Mount Washington Ski Resort opens to the public, with a Borer Handle Tow lift, the Green Chair, a 1979 Mueller fix grip double chairlift, and the Blue Chair. Opening day lift tickets cost \$9.

1980 The Red chairlift is built.

1980 The Operations shop is constructed and a manufactured home is converted into the lift operations building.

1980 A flurry of building happens at Strata 799 as eager buyers begin to build their chalets and condos.

1983 Maintenance shop is built.

1983 Whisky Jack chairlift, a 1983 Doppelmayr fix grip triple chairlift, is built.

1984 The General Store is built, just down the hill from the main parking lot.

1985 Nordic Lodge was built.

1986 RV Park (originally slated for strata title lots) and building were built in the summer.

1989 Alex Linton and Henry Norie sold their controlling interest in Mount Washington Ski Resort Ltd. to George Stuart of Campbell River and a group of shareholders. *Continued on Page 22*



Ribbon Cutting Ceremony for expanded Alpine Lodge (Jan/1990), present are (left to right) Courtenay Mayor George Cochrane, Comox Councillor Barry Van Dusen, MLA Stan Hagan, Mount Washington Chairman of the Board George Stuart, Campbell River Councillor Bill Mathews and Cumberland Mayor Bronco Moncrief.

Visit us for fresh New Winter Fashions & Equipment!

Mount Washington Real Estate CHANNEL 4

For up to date Properties For Sale see Channel 4 on Mount Washington.

Cablevision on Mount Washington

Access to 40+ channels plus movie channels (for an additional cost).

Internet Ski Pack \$199.00 ~ Call for details

High Speed Internet
Now Available

Coastline Broadcasting

Tel/Fax: 250-337-1824
stpierre@oberon.ark.com
1502 Seaview Road, Black Creek, BC V9W 6E3

For winter fun get started at
CANADIAN TIRE
Courtenay



Tire Chains, Ski Carriers, Snowshoes, Outdoor Clothing and Accessories to get you off and running for the outdoors.

278 N. Island Highway, Courtenay
Tel. 250-338-0101

IPC World Cup Returns in 2009

Mount Washington Alpine Resort will host an International Paralympic Committee (IPC) World Cup event from March 8-14, 2009. It is the second World Cup Event in three years for the Resort, which hosted its first in 2007.

The Event consists of four races held over a five-day period - with time in between for training - and includes two biathlon and two cross-country competitions. There will also be opportunities for the public to watch the opening ceremonies and help celebrate the athletes and their achievements.

The Comox Valley will host up to 23 nations, including Canada, with at least 120 elite athletes competing. The Mount Washington event dovetails nicely with a World Cup being held at Whistler, and is also the final event of the IPC Cup series.

"Anybody I've talked to in the community has said they're excited that we're doing it again," said IPC World Cup Committee Chair Darryl Pippin.

Athletes and coaching staff will board buses and come straight to Mount Washington from Whistler.

"We expect to get a larger turnout of athletes than last time," Pippin said.

The flurry of activity that preceded the 2007 event is absent, as the trails set that year are ready for 2009. Technical delegates from the IPC visited Mount Washington in September to inspect the facility and gave it their approval.

"They really like the course here" because it works well for spectators, who can see most of the course from certain vantage points, Pippin said.



A tent village will be erected prior to the start of the event for waxing skis, feeding athletes, etc. Don Sharpe, Resort Director of Business Operations, is looking after venue management for the event. The one thing Pippin and his committee will have no control over is the weather. But Pippin isn't worried: racers in 2007 loved the fact nature threw everything from rain, snow, sleet and sun at them.

"The tougher it was, as long as there was enough volunteer effort there to keep the snow cleared...they were happy."

The weeklong event kicks off with a community welcome and reception on Sunday, March 8 and culminates with World Cup presentations and a banquet on Saturday, March 14.

The event committee needs between 350-400 volunteers to help run the event during that week.

Pippin wants to see even more public involvement in the 2009 World Cup, and hopes schools in the Comox Valley will consider doing something for students during the event.

"It's a great opportunity for our young kids to rub shoulders with the rest of the world," he said.

Olympic Dreams Begin with Our Youth



Mathieu Leduc's goal is to be part of Canada's Olympic Team

When the International Olympic Committee announced in the summer of 2003 that the 2010 Winter Olympics would take place in Vancouver and Whistler, B.C., Directors at Mount Washington Alpine Resort decided they wanted to be a part of the celebration.

And in the last five years, they have set out to accomplish a five-pronged, purposeful plan to do just that. "When the Olympics were announced...we saw that as a once-in-a-lifetime opportunity for worldwide exposure of the winter sports in B.C.," Resort Director of Marketing Karen Bonell said.

"Knowing that we're separated by a body of water, we knew we were going to have to have a plan if we wanted to capitalize on this opportunity."

The first thing they did was put together an Olympic strategy, which included five objectives they felt were achievable.

Those objectives included aiding local athletes in their Olympic aspirations, constructing a Mountain Sports Centre, attracting international teams to train at the Resort, hosting world events and creating marketing initiatives that would see the Resort partner with other groups to bring the world's focus to Vancouver Island.

The second thing they did was made the commitment to do everything they could to help Vancouver Island athletes get on the podium.

For that, they established the Vancouver Island Mountain Sports Society, made up of representatives from area alpine, Nordic, biathlon, freestyle ski and snowboard clubs, the Vancouver Island Society for Adaptive Snowsports, the Resort, mountain biking community, PacificSport and members of the community.

The primary mandate is to provide yearly grants to competitive athletes on the Island, to assist in travel costs associated with regional and national competitions and advanced training, Bonell explained.

"When you think about the Olympics, the first thing you should think about is the athletes. So that's where we started."

The idea to attract international teams to Mount Washington was a natural progression. The Resort has a competitive edge over other B.C. ski resorts in that conditions at Mount Washington are very similar to the Callaghan Valley, where the 2010 Olympic Nordic events will be staged.

"It's difficult to penetrate that world," Bonell said. "It's taken a lot of time."

THE CONA HOSTEL

"SUPPORTING THE JOURNEY"

Enjoy riverfront views in downtown Courtenay. Open year-round, your Comox Valley Recreation starts at The Cona. Dorms, privates & family suite. Beds from \$23 per night.

www.theconahostel.com

+1 (877) 490-CONA (2662) • Ph. +1 (250) 331-0991
440 Anderton Avenue, Courtenay • Beside the 5th St. Bridge

CYBER CITY VENDING

VENDING MACHINES THAT PROVIDE COMMISSIONS!

Available for your office, showroom, clubhouse, lobby etc...

Campbell River to Victoria

Contact
"Vending Expert Bill"
250-755-1828
cybercityadventures@shaw.ca

Serving Mount Washington Alpine Resort and ALL of Vancouver Island with Quality Snack and Drink Machines, Good Service and Honest Commissions.

250-755-1828 • www.cybercityadventures.com

Finest quality lingerie, pleasure toys & lubes for your Alpine Getaway at Mount Washington.

The Romance Shop

Courtenay • 589 Cliffe Avenue • 250-338-0669
Victoria • 2018 Douglas Street • 250-380-0069
Duncan • 80b Trunk Road • 250-715-1269
www.theromanceshop.org • 1-866-488-0069

WOMEN OWNED & OPERATED



Mountain Sports Centre on the Wish List for 2010

In addition to funding athletes, the Vancouver Island Mountain Sports Society (VIMSS) is overseeing a significant infrastructure project based at Mount Washington Alpine Resort.

Phase 1 was completed in 2007—including upgrades to Nordic trails (and a trailhead for Strathcona Provincial Park) and the Biathlon Range, an improved lighting system, a staging area for competition and preliminary site surveys for Phase 2, a building, to be situated across from Raven Lodge. The building will cost approximately \$2.1 million.

VIMSS and the Resort hope to realize Phase 2 in time for the 2010 Winter Olympics. Many international teams have already committed to coming to the Resort for training purposes before the Olympics, and such a facility would be a boon.

“For competitive athletes, the Mountain Sports Centre will be a central hub where they can store and maintain equipment, and access a modern gym and sport science lab,” Resort Marketing Director Karen Bonell said.

The building will also include offices for coaches and staff, group accommodations and a multipurpose media room to review training runs and host journalists during events.

The VIMSS received a matching grant in the spring of 2008 of \$555,000 from the North Island Economic Trust to put towards their Mount Sports Centre. VIMSS will have to raise the rest of the funds itself.

The Society has already received a land grant from Mount Washington worth approximately \$250,000, as well as a donation of \$15,000 from Rick Gibson.

The economic spinoffs as a result of the Mountain Sports Centre will be great, says VIMSS Chair Rick Morson. Estimates for the first year during construction are at \$7 million, with an ongoing impact of about \$150,000 per year to the three levels of government. The project will also create 25-30 jobs, Morson said.

Olympic Teams Like What They Are Seeing Here



The list of teams that have committed to coming to Mount Washington for Olympic training is growing.

The Alpine Resort has received commitments from Canada's Cross-Country Ski Team, Sweden's Cross-Country and Biathlon Teams, the Canadian, American, Swedish and Swiss Snowboarding Teams, Resort Director of Business Operations Don Sharpe said.

The Resort was also in discussions with France for their cross-country, snowboarding, biathlon and freestyle teams, Germany's biathlon team and had received interest from the Swedish Freestyle Team as the Marmot went to press. “It's been a lot of legwork up to this point,” Sharpe said.

Teams are only now starting to make plans for training prior to the 2010 Winter Olympics.

The Resort made the commitment in 2003 to try and attract international teams to Mount Washington. The commitment fit hand in glove with the creation of the Vancouver Island Mountain Sports Society and its plans to create a Mountain Sports Facility near Raven Lodge. “The plan's pretty much gone the way it was supposed to go,” Sharpe said.

Canadian ski teams have been visiting Mount Washington for the past 10 years: junior development teams, the main national teams, cross-country, biathlon and snowboarding teams. “Last year was the first year we had the snowboard team,” Sharpe said.

“They were great. They went out with a group of kids and ripped up the terrain.” Sharpe credits the Canadian Snowboard Team with drawing international teams to Mount Washington.

“The one surprise is the snowboard teams. The Canadian Team was here last spring. They found out about us through all the work we've done. They talked to the U.S. Team, they talked to the Swedes,” Sharpe added.

Mount Washington is an ideal place for the snowboarding teams to train prior to the Olympics because their race events are near the end of the Games, and the Resort is close by.

“The terrain we have on the Sunrise Chair is perfect for racing,” Sharpe said.

Peter Reinebo, Head of the National Olympic Committee in Sweden, says Mount Washington offers the best facilities closest to the Olympic sites, and the climate is similar to Whistler.

Although there are other resorts that are more accessible – no ferries, no flights necessary – the tipping point for him to choose Mount Washington was the hospitality the staff offers.

“We are coming with cross-country, biathlon, snowboard, alpine and freestyle moguls (teams),” Reinebo said in an e-mail interview.

Reinebo has been to Mount Washington three times already – twice in the summer of 2006 and once in the winter of 2007 – but says besides some of Team Sweden's coaches, the team members have yet to visit the Resort. They'll be here in 2009, though, in preparation for the 2010 Olympics.

“This is a tremendous win for the Comox Valley and Mount Washington,” President Peter Gibson said in a statement.

“There will be 40 to 60 athletes in the camps along with additional support staff. We are thrilled that our facilities and the region surpassed their expectations and needs.”

Continued on page 23

Relax. Live. Breathe.

An Aon Advisor can help you choose the right insurance coverage for your Mt. Washington rental property.

Ask us about our Non-Resident Condo product — designed especially for you.

Contact:
Scott Rowan
1.877.388.7577
scott.rowan@aon.ca

BEAVERTAILS®
PASTRY • SINCE 1978
MOUNT WASHINGTON

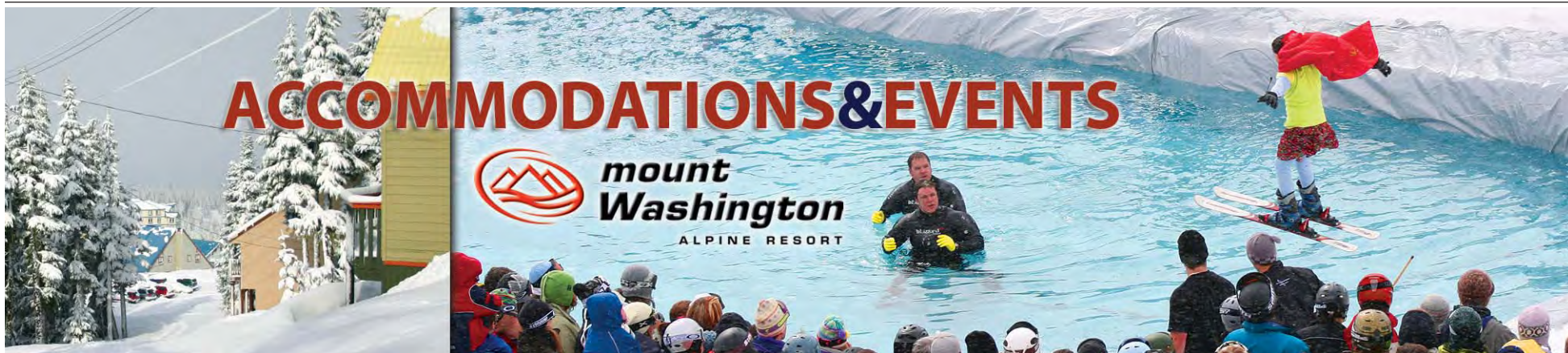
2 Cinnamon Sugar Tails for \$6

Valid only Monday - Friday - Not valid December 19 - January 5, 2009, Spring Break or Easter Break. Coupon expires August 31, 2009. Coupon must be presented - only valid at Mount Washington.

ACCOMMODATIONS & EVENTS



**mount
Washington**
ALPINE RESORT



Photos: Tony Radem, courtesy Mount Washington

Special Events 2008/2009

Dec 11 Night Skiing Begins (conditions permitting) Check out the lit intermediate terrain and the Stomping Ground terrain park off Whiskey Jack chair.

Dec 23 Carols by Candlelight

Grab your toques and scarves, and warm your vocal chords for an evening of song and good cheer! Follow the candlelit trail from the Alpine Lodge to the Ozone tubing park.

Dec 24 Christmas Eve Service

A multi-denominational service celebrating Christ's birthday.

Dec 26 Coca Cola Torchlight Parade & Fireworks Display

Come on out with the whole family to take in this FREE light show spectacular! It starts with a breathtaking torchlight parade, followed by an incredible fireworks show!

Dec 31 60s Theme New Years Bash

in **Fat Teddy's** Help us bring in the New Year in a style reminiscent of our past. An evening at the Cavern Club with "The Sutcliffees", featuring a high energy tribute to the early Beatles, Elvis, and Johnny Cash with a modern edge. Come prepared to Twist & Shout!

Raven lodge New Years Celebration **Sold Out**

Jan 3 The Rock Star Rail Romp

So you wanna be a rockstar? Well get your



Photo: Tony Radem, courtesy Mount Washington

shred sticks on and come prepared to throw down and get warmed up for the season as we host the first night time park event of the year, the Rockstar Rail Romp!

Jan 10 - 11 Avalanche Awareness Weekend

Come on up and help the Canadian Avalanche Association promote alpine safety. Silent Auctions, demo's and prize giveaways.

Jan 12 - 16 Kokanee Winterfest

Celebrate Kokanee Winter Festival with half-price midweek full-day lift tickets and Nordic trail passes.

Jan 12 - 16 The Kokanee Krew Pageant

ATTENTION LADIES! Come and strut your

stuff to win a contract to become a Kokanee Krew Glacier Girl for the 2008-2009 winter season.

Jan 16 Kokanee Day for Dudes #1

Dudes! One Friday a month, get your lift pass, an All-Mountain Lesson and apres for only \$62 and \$32 for Season Passholders. This Friday's Apres: Kokanee Krew Girl Search including entertainment, prizes, and Kokanee beer! You be the Judge!

Additional dates: Feb. 6, March 13 & April 3

Jan 17 The Yeti Snowshoe Adventure Race

If this Nordic Snowshoe Race doesn't take your breath away, the scenery will! For more info on The Yeti Snowshoe Racing Series, stomp over to www.theyeti.ca.

Jan 17 Kokanee Island Theme Party

with **Mobadass** Kokanee "Island" theme party with live kick-ass party tunes by "Mobadass" featuring Wide Mouth Mason's Earl Pereira. Funk - Rock - Ska - Reggae

Jan 19 - 23

Rossignol National Ski/Board Week

Free beginner ski or snowboard lessons!

Jan 23 Fanta Fridays! Come session your favourite hit in the lit up Stomping Ground Terrain Park! Get in on the action with tons of prize giveaways, rail jams and shred time under the stars!

Additional dates: Feb 27 & Mar 27

Jan 24 The Brick Rail Jam

A call to skiers and boarders: show off your jibbing skills on a series of rails and boxes, and win great prizes while you're at it! Round 1 for the "King of the Hill" Series!

Jan 30 Luv Shak

Vancouver's premiere party band "Luv Shak" featuring international recording artist "Camille Miller" will perform Friday, as well as host Saturday's Beach Party.

January 31 Beach Party With Luv Shak

Our annual beach theme party featuring Vancouver's Luv Shak. Costume contest, prizes, games, theme specials.

Feb 1 21st Annual Herb Bradley Coca Cola Classic

This fundraiser for Vancouver Island Society for Adaptive Snowsports is open to all public and attracts both skiers and boarders.

Feb 14 Valentine Night Time Speed Chair

Dating Come up and couple up! Night lift passes will be 2 for 1 between you and your longtime sweetheart - or perhaps we can inspire you to find a new love... singles, join up with another single and get your night lift passes 2 for 1!

Feb 15 Ski for MS Fundraiser

Do you want to help people affected by Multiple Sclerosis? Do you want to help find a cure for MS? Do you want a free day skiing or snowboarding at Mount Washington? Then this day could be for you!

Events continued on Page 19

**AT THE END OF THE DAY,
WHERE WILL YOU STAY?**

Spectacular
2 and 5 Day Packages

DEER LODGE

AT MOUNT WASHINGTON

Toll Free: 1-877-845-4499

or 250-338-4383 Fax: 250-338-4366

dlreservations@mountwashington.ca

www.mountwashington.ca



The
Westerly Hotel

SKI PACKAGES

Starting at

\$89.95

per person

Package includes

One Night, One Lift

Ticket & One Breakfast

1-800-668-7797

www.thewesterlyhotel.com

1590 Cliffe Avenue, Courtenay, BC V9N 2K4 • 250-338-7741

* Nightly rate in economy season based on double occupancy. Rooms subject to availability. Not inclusive of Taxes.

Winter at its Best!

Spend a night at Bear Lodge and you may want to stay all winter!

**2 or 5 Night
Getaway Packages
Available!**



**mount
Washington**
ALPINE RESORT

www.mountwashington.ca

Toll Free: 1-877-338-8784

or 250-338-8784 Fax: 250-338-8646

e-mail: bearlodge@mountwashington.ca

For Up-To-Date Rental Accommodations: www.mountwashingtonaccommodation.com

OFF MOUNTAIN



drive in-ski out . sleeps nine
heated outdoor pool . hot tub
wireless . tv . dvd

1 877 285 2294

Mount Washington Phone Directory									
Altitude Sport & Gift	250-334-5721	Central Res.	1-888-231-1499	Fireweed's Restaurant	250-334-5706	Police NON-EMERGENCY . .	250-338-1321	Resort Info	250-338-1386
Ambulance	911	Fat Teddy's Grill	250-334-5716	General Store	250-334-5745	Raven Lodge	250-334-5764	Security	250-792-1204
Catering	250-334-5757	Fire - to report a fire	911	Police EMERGENCY	911	Real Estate (Rick Gibson) .	250-338-1723	Utility EMERGENCY	250-334-5737

Winter Exploring at Horne Lake Caverns

Voted "Top 25 Things To Do in Winter"
Westworld Magazine

Spelunking Cave Tours

- informative guided tours or guide yourself
- get a map, helmets & lights at the Campground Office

Canoe/Kayak & Fishing Packages

- rent a canoe or kayak, paddle the crystal clear water
- rent a fishing rod - stocked with delicious rainbow & cutthroat trout
- check out the birds, beavers and other wildlife

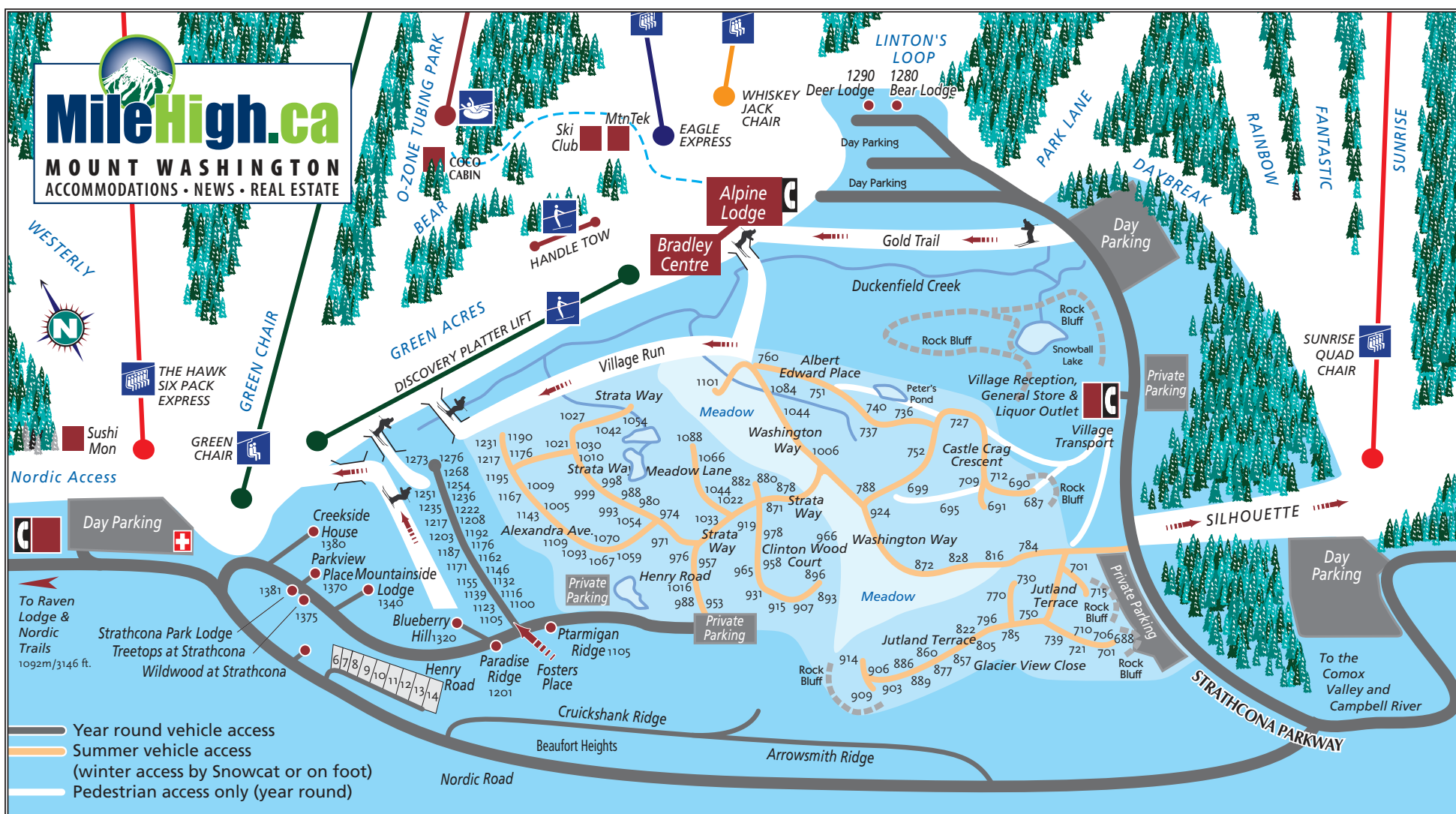
online reservations
www.hornelake.com • 250 248-7829

THIS WINTER!

Mention "The Marmot" or present your ski pass and get \$5.00/EE per person.



Mount Washington Alpine Village



Getaway to Mount Washington

Offering Bookings for...

• Blueberry Hill • Creekside House • Mountainside Lodge • Paradise Ridge • Parkview Place • Ptarmigan Ridge • Private Chalets On Fosters Place

Toll Free Reservations: 1-866-826-7325
or 250-923-7320 • www.peakaccom.com

PEAK ACCOMMODATIONS
MOUNT WASHINGTONS all season ACCOMMODATION BOOKINGS



Olympic Connections in Beijing

Marketing has been an important initiative for Mount Washington Alpine Resort as it pursues a supporting role in the 2010 Winter Olympic Games to be held at Vancouver/Whistler, B.C.

Last summer, with that in mind, Resort Marketing Director Karen Bonell and Resort Director of Business Operations Don Sharpe headed to Beijing, China, to the 2008 Summer Olympics.

Bonell is Chair of the Tourism Vancouver Island 2010 Task Force, whose mission, she says, is to leverage the 2010 Winter Olympic and Paralympic Games by effectively co-ordinating opportunities to maximize Vancouver Island and the Sunshine Coast's exposure by increasing tourist visitation.

Mount Washington Director of Marketing Karen Bonell, second from left, and Resort Director of Business Services Don Sharpe, second from right, join Mr. Wang, Vice Director of China Disabled Persons Federation, Ms. Tang of the Beijing Organizing Committee for the Olympic Games, and Trevor Kier, Manager, 2010 and Corporate Relations for Tourism British Columbia.

Going to Beijing "was an awesome experience," Bonell said. "We had a full agenda, giving us a behind-the-scenes look at business marketing opportunities around an Olympic Games. It gave us key connections," she added.

Ironically, one of those connections came with IMG Sage Hills Development, which plans to develop more than 2,000 acres near Cumberland, B.C. IMG Academies intends to run a golf and tennis training facility in conjunction with Sage Hills. Bonell said that partnership in particular could be fruitful in the near future for Mount Washington.

"It was a good experience," Sharpe said of the trip. "It was different than the Winter Games, but I think we made some good connections."

Sharpe was part of a Comox Valley delegation that travelled to Torino, Italy, for the 2006 Turin Winter Olympics.

Ironically, Sharpe and Bonell met B.C. Premier Gordon Campbell while at a Coca-Cola reception in Beijing. "He knows we were there and he knew we



Beaufort Heights Leads the Way in New Construction

Building confidence remains high at Mount Washington despite a recent economic downturn in Canada, and a softening of housing prices.

Perhaps the most visible evidence can be seen in Beaufort Heights, the newest area at the Resort located on the hillside above Nordic Road.

"With the success of the new lot sales in Beaufort Heights, interest is strong in new construction," says Rick Gibson, Realtor with Royal LePage in the Comox Valley.

"Already there are six homes under construction and rumour has it another dozen will start in summer 2009."

Dirk Nagtegaal of Campbell River aims to have his chalet open and ready for rental by Christmas 2008. His building,

overlooks Nordic Road and Strathcona Provincial Park.

"It's kind of exciting to be part of that" new construction boom, says Nagtegaal, who invested in the Beaufort Heights lot along with several family members. The family intends to use the chalet part of the winter and rent it out to help offset building costs.

"I thought it would be a reasonable investment," he said. Nagtegaal had been searching for recreational property when he ran across a listing for Beaufort Heights. Since his family members - including four grown children - all have skied and enjoy walking the trails around Mount Washington and Paradise Meadows, he felt a chalet would be suitable.

"It's a beautiful facility," he says of Mount Washington. And with the push to expand real estate at the Alpine Resort "it seemed like it was going in the right direction."



Karen Bonell joins Len Jordan, Coca-Cola's Director of Venue Operations and Planning, Vancouver 2010 Olympic Project Team, during one of her many meetings during the Beijing Olympics in China last August.

were there promoting the Comox Valley," Sharpe said. "You don't get the opportunity to spend 15 minutes with the Premier of British Columbia very often."

Sharpe and Bonell met with the Minister of Sport for China, discussing the upcoming International Paralympic Committee (IPC) World Cup event at Mount Washington. "We had an opportunity to talk about training," Sharpe said.

Bonell was interviewed by Global Television; other opportunities included Sharpe going to the Johnson and Johnson facility and observing what they do as a sponsor to the Olympic Games.

Bonell and Sharpe spent some time with representatives from the Chinese Paralympic Committee while at the B.C.-Canada Pavilion, and at a dinner sat with the vice-president of operations for Melco China Resorts, which operates five different ski resorts in China.

"You just get an understanding what it's like to be running a ski resort in another country," Bonell said. "Especially China. We just don't understand the market."

The week wasn't all work and no play. The highlight of the trip for Bonell was watching the men's singles tennis finals. The gold medal ceremony was very emotional, she said. "It was very moving."

Looking to maximize returns on your Mountain Investment?

We've achieved our 1st year goals are you achieving yours?

If you want to pursue new markets & midweek opportunities

If you recognize the potential of co-ordinating common interests on the mountain

And, you want a voice on the future of your "All-Season" Alpine Resort

Membership is for you . . .

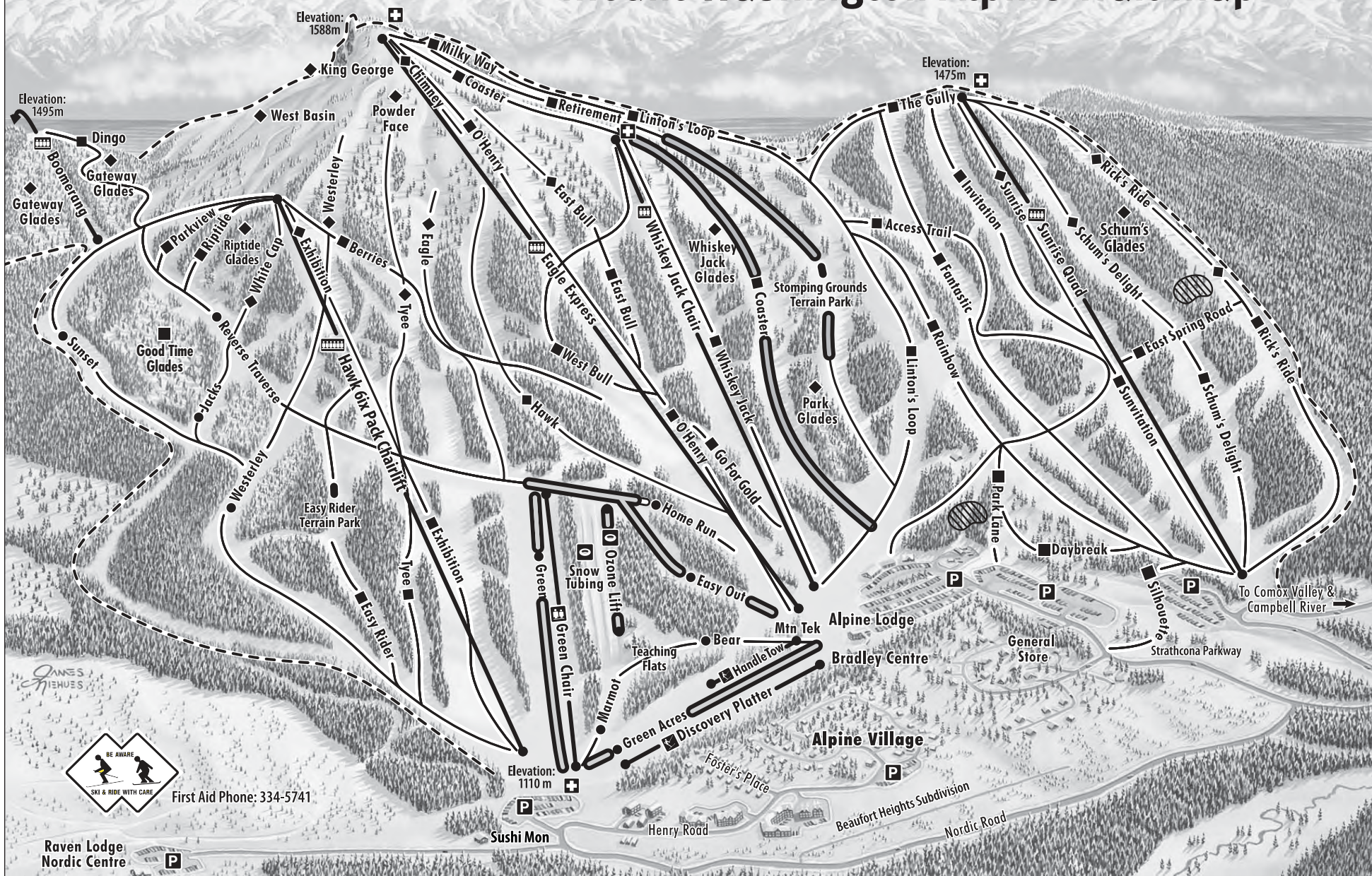
Please contact
Tourism Mount Washington
for further information and
request a membership
application form

Tel: 250 338 0226



membership@tourismmountwashington.com

Mount Washington Alpine Trail Map



AMENITIES

ALPINE LODGE

- Alpine Cafeteria
- Fat Teddy's Bar & Grill
- Altitude Sport & Gift
- Fireweed's Restaurant

- The Hungry Marmot Express
- Beaver Tails
- Season Pass & Group Sales

BRADLEY CENTRE

- Rentals
- Snow School
- Mountain Kids
- Licensed Child Care

GENERAL STORE

- Groceries
- Liquor
- Video Rentals

Mtn Tek Demo Centre

- Repairs
- High Performance Rentals & Sales

RAVEN LODGE

- Nordic Rentals
- Sport Shop
- Restaurant
- Snowshoe Centre

Night Lit Skiing

Permanently Closed Area

VALHALLA PURE

OUTFITTERS

vpo.ca

Since 1990

The gear is here.

219 Fifth Street

COURTENAY

334-3963
1-888-551-1860

6550 Metral Drive

NANAIMO

390-6883
1-888-551-1858

The BEST Gear at the BEST Prices - Guaranteed!

RACE • TRAVEL • SKI



Continued from Page 13

Competition open to all ages. Riders and skiers throw down some killer tricks at this great competition.

March 2 - 6 CIBC Wood Gundy Women's Week Women's Day Escape Packages on special all week! Includes Lift, Lesson, and Lunch with activities!

March 7-8 Full Throttle Slopestyle

Last event in the King of the Hill series: Skiers on Saturday, Snowboarders on Sunday. Compete on a number of different hits, rails and boxes down the Slopestyle course in the Stomping Ground Terrain Park.

It's gonna be a party! Awesome beats, Okanagan Springs Beer Garden, BBQ, and outrageous entertainment get you amped to catch Whistler and the Island's Best Freestylers ripping it up.

March 16 Barq's Snowtube Festival
Families! Join us at the Ozone Tubing Park for fun activities, prizes, FREE Barq's root-beer, and of course snow tubing!

March 16-20 Chek News Spring SnoJam
Some great Spring SnoJam events to spice up your family's Spring Break, including the Old Dutch Obstacle Race and Beaver Tails tail eating contest!

March 17 Beavertails Tail Eating Contest

The Mountain's local Beavertail hut has a

great competition for you! Its the annual tail eating contest; see how many Beavertails you can eat AND hold down!!!

Free bag of chips, free obstacle course fun,
and prizes for participants from Old Dutch!

Just another way to enjoy Spring Break!
Kids can join us for this poker-style
scavenger hunt between the Alpine Lodge
and the Hawk Chair.

**March 28 Final Evening of
Night Skiing for Winter 08/09**

A season-long film and photography contest to showcase local talent and celebrate memories made on Mount Washington!

Build a sweet Dummy Skier or Boarder, and send it over a big jump just outside the lodge. Prizes for best dummies and biggest wipeouts!

Can YOU cross the slush pit?

April 19 Royal LePage Snow to Surf Race
Come on up and see one of the most incredible team races on the planet!

June 20 Summer Chairlift Rides Begin

June 27 Summer Mountain Biking Begins

For up-to-date info on all of
Mount Washington events go to

www.milehigh.ca

Entry Forms available on-line at
www.snowtosurf.com

Mountains Of Spectacular Specials Daily!
Dynamite Food & Yummy Bevvs!



**Whether you're a 'Snow Enthusiast' or a 'Snow Bunny'
Billy D's is the place for you to warm up, relax and enjoy.**

T. 250-334-8811 268 ~ 5th Street, Downtown Courtenay
Check out our entire menu at www.billydpub.com

HOME OF THE 55 MARTINIS

“Why the Waverley?”

Because it's been voted the
"Best Ski Town Bar in North America" by

skiing
MAGAZINE

Best Live Music in the Comox Valley
Great Food Like Mom Used To Make
Full Service Liquor Store (Cold Beer & Wine)
Fun Frontier Atmosphere

THE WAVERLEY HOTEL

Open 9am-11pm • 7 Days a Week

 2692 Dunsmuir Avenue, Cumberland, BC 250-336-8322



A new style of instructor training is coming to Mount Washington Alpine Resort.

Section 8 Snowsport Institute is Vancouver Island's only ski and snowboard training company, offering intensive four- or 12-week training courses.

"Our philosophy is that great snowsport professionals are diversely trained and can adapt to any situation," owner Tobin Leopkey writes on his website about the Institute.

Leopkey grew up skiing the deep and steep tree lines on Vancouver Island but has been found teaching and participating in outdoor pursuits in various corners of the globe. He spent several years instructing at Whistler before turning his sights to the Island.

"I grew up in Nanaimo and ski at Mount Washington," he said. After spending a few years teaching for someone else's company, he decided to strike out on his own.

"I thought about the Island; I knew there was no other company similar to this one here. It's an ideal place, it gets lots of snow."

Leopkey takes care of the ski instruction, and partner Mike Bray looks after snowboard instruction. Bray is also the Technical Director of Snowboarding at Mount Washington.

Bray has taught across Canada from Ontario to B.C. as well as internationally in Andorra. For the past 13 years he has spent his winters in the mountains and summers just seconds from some of the best surfing beaches.

Leopkey's wife Kana is also a ski instructor with more than 14 years teaching in Japan and Canada. The couple has a baby daughter who will spend her winter trekking the Resort in a baby backpack.

As Section 8 grows, Leopkey and Bray have struck a deal to employ some of Mount Washington's professional coaches when the need arises.

They also contract out the backcountry and avalanche portion of their training to Jan Neuspiel and Cliff Umpleby of Island Alpine Guides.

Section 8 offers two programs, a four-week and a 12-week Snowsport Leadership Training program. The longer program is designed to create well-rounded skiers and snowboarders and prepare them for jobs in the industry beyond simply instructing, Leopkey said.

The first two weeks of both courses are spent on ski or snowboard improvement. The third week includes some backcountry skills such as navigation and building a snow cave. The fourth week is devoted to Level 1 instructor certification (either Canadian Ski Instructors Association or Canadian Association of Snowboard Instructors).

The remaining weeks of the more intensive course goes into race training, the terrain park, wilderness first aid, avalanche safety training and more technical training, as well as Level 2 certification.

Leopkey hopes to draw clientele from the United Kingdom and Australia, where there is interest in taking intensive instructor courses. He attended the London ski show along with Mount Washington Director of Marketing Karen Bonell and Sarah Nicholson of Tourism Mount Washington, and said the experience was positive.

Section 8 is based out of the Comox Valley. Program participants will be housed in one of two local hostels, and transported to Mount Washington for lessons Monday through Friday. On the weekends, Section 8 hosts will arrange day trips around Vancouver Island - surfing, bungee jumping, diving, whatever clients are interested in.



The VI Riders are hoping to bridge the gender gap this season.

Vancouver Island's only snowboard freestyle club wants more girls to join their group - so far they only have one, Kirsty Macdonald.

"We've had several girls who are talking to us" about joining, VI Riders Vice-President David Donald said. "We're trying to encourage female ridership."

This is the second year that Donald and his wife Kelsa, who is President of the Organization, have run the Snowboarding Club. One of their goals, says Donald, is to see the Club grow from the present 18 or 19 members.

The VI Riders have both a development and a competitive stream in their 13-week program. The Club delivers professional coaching in disciplines including slopestyle, park, free riding and rails.

The Development Program runs on Saturdays and the Competitive Program on Sundays. There are several events that the recreational participants can compete in at Mount Washington, Donald said. The more competitive Club Members race in B.C. Snowboard Association Events in other resorts such as Big White, Cypress and Grouse Mountain.

VI Riders Coaches include Dane Kaechele, an eight-year coaching veteran, Linden Ruecker (seven years), Mischa Christian, who has been riding for 15 years, and Brett Kirton, who has been riding for eight years.

This year the Club welcomes a Paralympic competitor, who is also an instructor with the Adaptive Snowsports Program at Mount Washington Alpine Resort.

For more information about the VI Riders, go online to www.viriders.org, e-mail viriders@yahoo.ca or phone the Donalds at (250) 923-0523.

Strathcona Nordics Update

The Strathcona Nordics Cross Country Ski Club is preparing to host a second International Paralympic Committee (IPC) World Cup Event in March 2009.



One of the Club's goals is to work for the improvement and development of cross-country ski facilities on Vancouver Island. Mount Washington boasts 55 kilometres of track set and skating trails, which club members utilize throughout the winter.

The Nordics offer a variety of programs under the Rabbit Skill Development umbrella. Skiers aged four and five years enroll in the Bunnyrabbit program, which introduces them to Nordic skiing. The Jackrabbit program is for skiers ages six to 12 years.

There are also programs for youth, masters, biathlon and backcountry skiing, as well as coach and official certification courses. Courses range from adventure programs teaching backcountry skills to development and racing.

Rabbit Skill Development programs begin at Raven Lodge on Saturday, Jan. 3 or Sunday, Jan. 4 and run until Saturday, March 7 or Sunday, March 8.

For more information on the Nordics, go online to www.strathconanordics.com.

MOUNT WASHINGTON SKI CLUB

Proudly training Olympic Hopefuls on our Island Mountain!

Our aim as a Ski Club is to provide a high quality and affordable competitive program for our young athletes.

PROGRAMS INCLUDE

- Alcan Nancy Green Ski League (Ages 6-8 & 9-12) & NEW 1/2 Program (Ages 4-5)
- Juvenile Racing Program (Ages 11-12 & 13-14)
- Junior Racing Program (Ages 15+)
- All Mountain Skills (Ages 11-16)

FOR MORE INFO... mtwashington.bcalpineclub.ca

While Mount Washington Alpine Resort welcomes aspiring athletes from around the world for pre-Olympic training to a mountain boasting some of the most spectacular coastal alpine settings in North America, they can also be proud of helping Canada's most endangered mammal, the Vancouver Island Marmot, begin a slow recovery on the very same slopes.

The Alpine Resort is a key partner of the Marmot Recovery Foundation, donating the land on which a dedicated Marmot Recovery Center was built to prepare marmots, born in a national zoo-based captive breeding program off-island, for release back to the wild alpine bowls they historically called home. One of those homes is Mount Washington itself, which has consistently hosted the largest surviving wild colony on Vancouver Island, the only place in the world these marmots are found.

This summer, nine captive-born marmots were released at Mount Washington to augment the wild colony living there, which now numbers over 30 marmots.

Throughout the ski season the marmots remain snuggled up, safe and sound in their burrows in hibernation, oblivious to the winter activities taking place around them.

As a matter of fact, it is thought that the presence of the alpine resort may be a key factor in why the wild Mount Washington Marmot colony survived while other more remote colonies nearby in the pristine habitat of Strathcona Park did not.

The presence of year-round human activity near the wild marmot colony may have acted as a deterrent to predators and protected the marmots from predator mortality at a time they were particularly vulnerable.

The Marmot Recovery Foundation is working to restore the wild marmot population through an intensive captive

2nd Generation Marmot Pups Born in the Wild



breeding and reintroduction program, identified by the Vancouver Island Marmot Recovery Team as the most effective way to save the uniquely Canadian marmot from near extinction.

"This year we've begun to see the positive impacts of our earlier releases on the wild population", said Viki Jackson, executive director of the Marmot Recovery Foundation. "Eleven litters were born in the wild in 2008, up from only three litters in 2007, and seven of those litters involved at least one captive-born released marmot. Those are significant gains."

"But the real thrill has been the births

of the first 2nd generation pups, from pups previously born in the wild from captive-born released marmots" she said.

"I know that's a little hard to follow but when you see 2nd generation animals being born in the wild you can really see you're getting somewhere."

While the Vancouver Island Marmots are showing they have the potential for a full recovery they remain dangerously close to extinction with a small and fragmented population of less than 160 mar-

mots in the wild. The goal is a population of between 400-600 marmots in three distinct regions on Vancouver Island.

"It will take a few more years of intensive efforts to safeguard the population but it is a battle against extinction we can win if we have the resources. The support of the public is critical to ensure these little guys make it," Jackson said.

For more information or to make a donation to help save the Vancouver Island Marmot go to www.marmots.org



Adopt a Marmot

This is a great way to help this endangered species as well as an opportunity for you to learn more about these interesting creatures

When you join the **Adopt-a-Marmot Club**, you help protect the endangered Vancouver Island marmot every day of the year. Pre-arranged monthly gifts are a convenient way to help save this beautiful and special creature from extinction. Your gift supports the field research and captive-breeding that's so critical to marmot survival. For instance, your contribution will help fund ear-tagging of wild marmots, which is the only way in which we can identify and track individual marmots and the success of recovery efforts in future years.

When you Adopt-a-Marmot you'll receive:

- Your personalized marmot adoption certificate
- Your full-color poster of a Vancouver Island Marmot
- Your official recovery project newsletter (The Marmoteer)
- Your special year-end report about individual marmots

For more info go to www.marmots.org/adopt.htm

HELP SAVE THE VANCOUVER ISLAND MARMOT!

Name _____

Address _____

City _____ Prov _____

Country _____ Postal Code _____

I'd like to help our Marmots with a tax-creditable donation. Please accept my gift of:

☐ \$25 ☐ \$50 ☐ \$100 ☐ other

Sign me up! I want to join the Adoption Club: ☐ \$120 for one year, OR

Per month: ☐ \$10 ☐ \$15 ☐ \$20 ☐ \$25

I authorize the Marmot Recovery Foundation to deduct the above amount from my chequing account monthly. (I have enclosed a blank cheque marked VOID for processing purposes.)

Signature _____

YOUR GUARANTEE: You can change or cancel your pledge at any time.

METHOD OF PAYMENT

☐ Cheque payable to: **Marmot Recovery Foundation**

☐ Visa ☐ Mastercard

Card # _____ Expiry Date _____

Signature _____

Marmot Recovery Foundation www.marmots.org

Box 2332, Station A, Nanaimo, B.C., Canada V9R 6X6 Fax: 250-753-8070



Registered Charity #
88998 0629 RR0001

Mount Washington Celebrates 30 Years

Continued from Page 10

1989 Also that year, Mount Washington opened for its first summer season.

1990 Alpine Lodge expanded.

1990 Borer Handle Tow lift modified and updated.

1990 The premier issue of the Marmot, a publication of Mount Washington Mile High Properties, hits the stands in the fall of 1990.

1991 Mount Washington earns a national award from the Canadian Ski Council for having the best skier development program in Canada.

1991 A condo at the 12-unit Snowbird building in the Alpine Village is worth \$89,900.

1992 Foster's Place (24 units) broke ground.

1992 Sunrise Quad chairlift opens (a CTEC fix grip quad chairlift), the first quad chair for the Island and opening up brand new territory.

1993 Blueberry Hill (50 units) was built, giving the Resort its first drive-in/ski-out condo development.

1991 Skier visits in Dec. totaled 58,346.

1994 Employment and Investment Minister Glen Clark and Comox Valley MLA Margaret Lord announce a financing partnership between the B.C. Provincial Government and Mount Washington to reconstruct and pave the access road to the Resort. The first shovelful of dirt was turned before the end of the summer.

1994 Ptarmigan Ridge (40 units) was built across the street and up the hill from Blueberry Hill.



Bradley Centre under construction

1994 – Bradley Centre opens. Named for the late Herb Bradley, who taught scores of young men and women to ski and was also instrumental in the success of the Vancouver Island Skiing for the Disabled Society, the centre holds the snow school.

1994 Platter lift is opened in the beginners' area (a 1994 Borer Platter lift). The ski season is so good the Resort stays open until April 24.

1995 Paradise Ridge (with the only swimming pool at the Resort), Creekside



Foster's Place during construction stage

House and Mountainside (40, 21 and 28 units respectively) were built in a flurry of activity on Henry Road.

1995 Also in 1995, cable television came to the Resort thanks to Coastline Broadcasting Ltd. of Gold River.

1995 The Resort opened its first half-pipe for the snowboarding crowd.

1995 The Resort played host to the skiing events for the B.C. Winter Games, which the Comox Valley was hosting.

1996 Deer Lodge was built as part of Appia Developments' Village Core plan and opened (in 1997) with 59 units.

1996 Sewage treatment plant is built on Nordic Road, putting in place the infrastructure for future expansion.

1996 The road to Mount Washington is finally paved from bottom to top and renamed Strathcona Parkway.

1997 Back on Henry Road, Parkview Place (13 units) was built.

1997 Ozone Tube Park opens with a Leitner lift, adding another way to enjoy snowsports at the Resort.

1997 Ticket kiosk is built in front of the Alpine Lodge, making it even easier to purchase a day pass at the Resort.

1997 The Alpine Lodge is expanded again to include Fat Teddy's Bar & Grill and Fireweed's Restaurant, and to expand Altitude Sport & Gift.

1998 The Eagle Chairlift, a CTEC detachable high-speed quad, is built, replacing the Blue chairlift.

1999 Mount Washington celebrates 20 years with a record snowfall of 19 metres.

2001 Raven Lodge is built, and becoming the launching pad for Mount Washington's successful Nordic skiing.

Raven Lodge



2002 The Hawk CTEC detachable six-pack chairlift opens, bringing new technology to the Resort and replacing the Red Chair.

2002 The Marmot Recovery Centre opened at Mount Washington. A project of the Marmot Recovery Foundation, the centre provides a place to conduct a breeding program in an effort to revive an endangered species, the Vancouver Island Marmot.

2003 Bear Lodge opened its 59 units, adjacent to Deer Lodge. First building to incorporate rain-screen technology.

2004 Mount Washington celebrates its 25th anniversary.

2005 Mountain Tek Ski Shop receives an addition.

2004 The Boomerang chairlift, a Doppelmayr CTEC fix grip quad chairlift, is constructed. This is the first over-and-back chairlift for the West Coast, and opens up new black-diamond terrain in the Outback, west of existing terrain, near McKay Lake.

2006 First aid building relocated and was built.

2007 Victoria developer Chris LeFevre began clearing the way for Beaufort Heights.

2008 The first chalets in Beaufort Heights began to take shape.

2008 Peter Gibson is still working at Mount Washington, only now he is President.



Sasquatches on the Move?

The Sasquatch, said to inhabit Mount Washington and the nearby Vancouver Island Mountain Range, has ventured farther afield. That is the finding of zoologists who have scoured the mountain in search of evidence.

And while there were less sasquatch sightings around Mount Washington Alpine Resort in the summer, more were reported than ever before in the wilds of Northern B.C.

A woman camping with her husband near Campbell River reported to the Houston, British Columbia Canada (HBCC) UFO Research centre that they encountered a seven-foot-tall, hairy character walking on its hind legs while they

TheMarmot

MILE HIGH NEWS ON MOUNT WASHINGTON

Published for your convenience by Rick Gibson of Royal LePage in the Comox Valley.

If you are looking for more information, wish to advertise, or want to submit information in future issues please refer to these contacts:

Information: rick@themarmot.ca

Editorial: Susan Quinn

Sales: Wendy Woodley 250-897-3678 or wendy@themarmot.ca

Design/Production: Havers Design

Printed in Canada

To read past issues of The Marmot go to

www.milehigh.ca



were riding their all-terrain vehicles down a logging road on Aug. 31.

"It walked upright like a man swinging long arms by its side," the witness was reported to have said on the weblog Bigfoot-sasquatch.blogspot.com.

Experts ponder whether that means the sasquatch is increasing its foraging territory, or whether they're just tired of snowboarding.

There were three sightings in late July and August in the Houston area, and a self-proclaimed sasquatch hunter from Terrace told his local newspaper that he has a sasquatch footprint cast in his possession - 16 inches long, 10.5 inches wide and with four toe impressions.

Brian Vike, Director of HBCC, told the Houston Today newspaper that a researcher friend of his thinks it has something to do with increased bear sightings. When bears descend from alpine areas to hibernate, it stands to reason that other hairy beasts - such as sasquatches - would do the same, the researcher said.

As for late-summer reports that results from tests on genetic material from alleged remains of a sasquatch are 96 per cent marsupial, one zoologist says "Impossible."



Mount Washington Ski Club

Continued from Page 10

Those who are in the J-programs often decide to become FIS carded and compete further afield.

Several of the Club's ex-racers have come back to coach, and pass on tips of what they've learned along the way.

"The Ski Club...is an atmosphere for the whole family," says Trimmer. "Kids are skiing in the same group the whole year."

The Club has its own clubhouse, located behind Mountain Tech near the main lodge at Mount Washington. "It's a nice place to relax, make yourself a snack and mingle with other club members," says Trimmer.

The camaraderie among Club members and their families is second to none, says Normand Leduc, Past-President of the Club and father of two boys who have gone through both programs.

"It's an awesome club for promoting skiing and friendship," says Leduc. His older son David, 22, and Mathieu, 18, have both competed with Mount Washington Ski Club.

"It's fun for kids while they're learning a lifetime skill. For parents, it's a good social club. It's mostly families. It's all for the kids."

Mathieu Leduc started as a child in the Nancy Greene program, and while he is now with the B.C. Ski Team, his father says the Club is ideal for kids of all skill levels. "For a lot of kids, all they need is that focus," says Normand.

For more information on the Mount Washington Ski Club, go online to www.mountwashington.bcalpine.com.

Trimmer also recommends parents go online to www.ltad.ca/content/home.asp and read about developing sporting excellence and well-being.



Photo: Tony Radomir, courtesy Mount Washington

Olympic Teams Training Here

Continued from Page 12

In return for the teams agreeing to use Mount Washington as their pre-Olympic training facility, the Resort will bring in a facility for waxing near the Sunrise Chairlift. "If we haven't built our Sports Centre by then, we'll put together a fitness centre for them," Sharpe added.

Sharpe expects the Resort will see quite a few Paralympic teams come to train, especially after they check out the facilities for the International Paralympic Committee's World Cup event coming

in March 2009. "I think we're going to see a significant amount of Paralympic teams," he said.

One of the competitive advantages teams will have in training at Mount Washington, for the biathlon portion of the Paralympic Games anyway, is that the targets slated for Olympic use will be used at Mount Washington before being shipped to Whistler's Callaghan Valley in time for Paralympic events, Sharpe added.

Although he is pleased with the Resort's success in attracting international teams, Sharpe said their work is not done. "We're still looking for other teams, too. We're getting calls from people asking for information."



Serving the Comox Valley
and Mount Washington
Licenced & Bonded

- AUTOMOTIVE
- COMMERCIAL
- RESIDENTIAL
- 24 HOUR EMERGENCY
MOBILE SERVICE

Cedric Arsenault

338-6442

287-1034

291 Nim Nim Place, Courtenay



Photo: Susan Quinn

**Wilderness Centre
to Open Summer 2009**

Thanks to these Visitor InfoCentres for distributing The Marmot

Campbell River	1-877-286-5705	287-4636	www.visitorcentre.ca
Alberni Valley	250-724-6535		www.avcoc.com
Comox Valley	1-888-357-4471	334-3234	www.discovercomoxvalley.com
Cumberland	1-866-301-INFO	336-8313	www.cumberlandbc.org
Duncan-Cowichan	1-888-303-3337	746-4636	www.duncancc.bc.ca
Nanaimo	1-800-663-7337	756-0106	www.tourismnanaimo.com
Parksville	250-248-3613		www.chamber.parksville.bc.ca
Qualicum Beach	250-752-9532		www.qualicum.bc.ca
Saanich Peninsula	250-656-0525		www.spcoc.org

COASTLINE BROADCASTING LTD.

is a locally owned and operated digital broadcast Cablevision system serving Mount Washington.

- 2 Program Guide
- 3 CBC North
- 4 Mount Washington Real Estate
- 5 ABC KOMO Seattle
- 6 CBS KIRO Seattle
- 7 KVOS Bellingham
- 8 ITV
- 9 NBC - King
- 10 Mile High Mount Washington Community Channel
- 11 FOX-KCPQ Seattle
- 12 BCTV Vancouver
- 13 TSN Toronto
- 14 TBS
- 15 The Learning Channel
- 16 YTV Toronto
- 17 WGN Chicago
- 18 Knowledge Network
- 20 Super Channel (Pay TV)
- 21 Movie Max (Pay TV)
- 22 TFC Family Channel
- 23 CHVU
- 24 CH
- 25 Much Music
- 26 WSBK
- 27 CBUT
- 28 CBMT
- 29 CTV
- 30 CNN
- 31 KCTS PBS Seattle
- 32 CMT
- 33 CNN Headline News
- 34 A&E
- 35 Discovery
- 36 CBC Newsworld
- 37 Prime
- 38 Outdoor Life (Pay TV)
- 39 Sportsnet (Pay TV)
- 40 Extreme Sports (Pay TV)
- 41 Space (Pay TV)
- 42 Speedvision (Pay TV)
- 43 History (Pay TV)

Situated at the Trailhead into Paradise Meadows, Forbidden Plateau and the dramatic Island mountain range the new Wilderness Centre construction reached lock up before the heavy snows fell.

The Strathcona Wilderness Institute says it will be operational for next year's wilderness adventures.

With a donation of 1.5 acres (approximate \$160,000 value) from Mount Washington, the Rotary Club of Campbell River stepped up to assist Strathcona Wilderness Institute and BC Parks realize their long awaited vision of a sub-alpine trail accessible to everyone and a permanent home for SWI's Wilderness Centre.

SWI operated out of a trailer in the parking lot last summer, but is looking forward to being in their new home and ready to serve the estimated 40,000 visitors that come through this portal.



Mile High Properties

FOR SALE ON MOUNT WASHINGTON



Business Opportunity!

Snow clearing business for sale on Mount Washington. Full service business that has contracts on many of the residential large and small buildings. Established with clientele and all equipment. Seller will train new owner. Information packages available only to serious qualified buyers. **\$99,900**



Lovingly Cared For!

Tucked in the woods with sunset views, this mountain home has it all. Very large spacious living areas with 2 bedrooms. This mountain home away from home has been lovingly cared for by its original owners and is looking for a new family to call it their new mountain home. Easy access to skiing and parking. **\$209,900**



Top Floor View!

Top floor 2 bedroom suite with sunset views and views of the slopes! Located in the village with easy ski out access and close to parking. Suite is clean, tidy and shows well. Building is well maintained with newer siding. Nice open floor plan and very quiet top floor corner suite. **\$199,900**



Close to Alpine Lodge!

Spacious, well-kept townhome with in a few minutes stroll of the Alpine Lodge. 3 bedrooms, 2 bathrooms and sauna. The inside is well cared for with a huge space in the lower floor for sleeping or recreating. Enjoy the outside patio, taking in the sunsets and mountain views. Ski-in and out access to the slopes. Fantastic location and great value. **\$249,900**

Rick Gibson

*Peak Performance
serving the
Mount Washington
Real Estate market
since 1989.*

250-334-3124 (24 hrs)

Direct: 250-338-1723

rick@rickgibson.ca



Web: www.rickgibson.ca

ROYAL LEPAGE

In the Comox Valley

Ready to Build on Mount Washington? Consider these choice building lots.

Let's Be Creative!

This large building lot is located on the Benchlands overlooking Strathcona Park with easy access to skiing and Strathcona Park. There are few building areas left on the mountain and this is the closest to the Hawk Chair. **\$169,900**

No GST!

Located on the Benchlands overlooking Strathcona Park, is this large building site, easy access to skiing and Strathcona Park. There are few building areas left on the mountain and this one is the closest to Hawk Chair. **\$187,500**

Closest to Hawk Chair!

Large building site located on the Benchlands overlooking Strathcona Park, (8,460 sq ft). Easy access to skiing and Strathcona Park. There are few building areas left on the mountain and this one is the closest to Hawk Chair. **\$249,900**

Foundation & Plans Included!

One of the few remaining chalet lots in the Alpine Village of Mount Washington. Price includes plan for an impressive chalet. The foundation has been completed. Spectacular location with easy access to parking and ski in and out location. **\$389,900**



IvesBurger

BARRISTERS & SOLICITORS

Your legal experts offering extensive experience with Mount Washington property transfers for over 25 years.

Paul R. Ives
Mark Burger
Michelle L. Perry



- Real Estate & Property Development
- Corporate Law
- Commercial Law
- Civil Litigation
- Wills & Estates
- Divorce & Family Law
- ICBC & Personal Injury

334-2416
info@ivesburgerlaw.com
Fax: 334-3198

www.ivesburgerlaw.com

505-5th Street, Courtenay, BC (Corner of 5th & Fitzgerald)

TRUSTED

Insurance Advisors to Mount Washington
Property Owners for over 20 Years

Please contact us for more information:

Liz Lindsay

phone: (250) 388-4416

fax: (250) 388-9926

mountwashington@jltcanada.com



JARDINE LLOYD THOMPSON
Canada

350, 4396 West Saanich Road
Victoria, BC V8Z 3E9

Ski Hike Bike Play Live



A Mile Above Extraordinary...

Mount Washington Alpine Resort is well worth considering for a lifestyle investment. Year round activities include Alpine and Nordic skiing, boarding, hiking, biking, golfing and fishing. The Village is just 30 minutes above the spectacular Comox Valley and it's international airport and beaches. Whether visiting for a weekend or a lifetime, **one website** can supply you with all the info you need to learn about this exciting family oriented resort.

MileHigh.ca



Web: www.rickgibson.ca
ROYAL LEPAGE
In the Comox Valley

Rick Gibson Toll Free: 1-800-638-4226 or 250-334-3124



BEAR LODGE

at Mount Washington

Features Include:

- Slopeside Location
- Fully Furnished, 6 appliances
- Rainscreen Technology
- Live-in Caretaker
- Underbuilding Parking
- Common Hot Tub
- 1, 2 & 3 Bdrm. some w/Lock-offs

102 2 Bdrm 882 Sq Ft Viewside	\$265,900
105 2 Bdrm 893 Sq Ft Slopeside	\$255,900
106 2 Bdrm 884 Sq Ft Slopeside	\$255,900
201 2 Bdrm 884 Sq Ft Viewside	\$249,900
202 2 Bdrm 879 Sq Ft Viewside	\$279,900
205 2 Bdrm 891 Sq Ft Slopeside	\$269,900
206 2 Bdrm 882 Sq Ft Slopeside	\$249,900
208 1 Bdrm 629 Sq Ft Slopeside	\$209,900
210 2 Bdrm 891 Sq Ft Slopeside	\$254,900
214 2 Bdrm 899 Sq Ft Viewside	\$279,900
303 3 Bdrm 1012 Sq Ft Viewside	\$399,900
310 2 Bdrm 882 Sq Ft Slopeside	\$269,900
315 1 Bdrm 620 Sq Ft Viewside	\$227,500
405 2 Bdrm 882 Sq Ft Slopeside	\$289,900
408 1 Bdrm 620 Sq Ft Slopeside	\$229,900
413 2 Bdrm 870 Sq Ft Viewside	\$315,000



Features Include:

- Elevator Access
- Spectacular Views of Strathcona Park and the Ski Runs
- Above & Underground Parking
- Propane Fireplaces
- Furnished units ready to go
- Ski Storage Room off the Lobby with separate lockers for renters

108 3 Bdrm, views of ski runs	\$259,900
111 3 Bdrm, views of ski runs	\$259,900
118 2 Bdrm and spa room, view of ski runs and Strath. Park	\$299,900
208 3 Bdrm SOLD! ski runs	\$274,900
214 2 Bdrm, view of Strath. Park	\$259,900
302 Penthouse (1600 sq. ft.)	\$425,900



Ptarmigan Ridge

Features Include:

- One Bedroom Apartments located on Henry Road
- Apartments are Furnished
- Drive To Access
- Propane Fireplaces
- Self-contained Kitchens
- Ski Storage Lockers off Lobby
- Breathtaking Mountain Views
- Convenient Location to Ski Lifts and Strathcona Provincial Park.

101 Facing the ski runs	\$149,900
104 Facing Strathcona Park	\$164,900
204 Facing Strathcona Park	\$169,900
303 Facing the ski runs	\$164,900
304 Facing Strathcona Park	\$177,500
307 Facing the ski runs	\$164,900



Lots for Resale!

Building sites available at Beaufort Heights. You will find these lots in the Phase 1 development.

ACT FAST on these!

Lot #3	(No GST) \$129,900
Lot #9	\$128,500
Lot #22	\$109,900
Lot #30	\$115,000



Vaulted Ceilings

West Coast designer townhome located close to the Alpine Lodge of Mount Washington. Offering 3 bedrooms, two bathrooms and sauna. Vaulted ceilings in the living room and gourmet kitchen with corian countertops. Ample storage and easy access round out this great package. Mount Washington offers incredible snow, and affordable real estate prices. \$289,900



Creekside House

Rarely do suites in Creekside House hit the open market. One owner, immaculately maintained 3 bedroom suite available. Quality plus building built by the same builder of Raven Lodge. Creekside is located immediately adjacent to the loading area of the Green Chair so is about as ski in and out friendly as you can get. Easy access to Nordic and Strathcona Park.

102 Ground Floor, 3 bedroom	\$297,500
303 Top Floor, 2 bedroom facing the ski runs	\$349,900
305 Top Floor, 3 bedroom facing the ski runs	\$399,900



784 Washington Way

3 Choices...

A Bright Buy!

Very unique and bright corner suite in Snowbird. 3 bedroom townhome with loads of natural light and extra windows. Very quiet location in the building and easy access to parking and skiing. 2 bathrooms, sauna, electric fireplace, open living area. \$234,900

Front Corner Views

Front corner townhome with south west views. 3 bedrooms and 2 bathrooms on 3 levels. Open living area with propane fireplace. Sauna upstairs to soothe the tired muscles. Great location and easy access to all amenities. \$274,900

South Facing Townhome

with easy access to parking and skiing. Basement undeveloped for additional usage. 3 bedrooms and 2 bathrooms. Propane fireplace for the cool winter nights. Quiet location and great building! \$274,900

PARADISE RIDGE

Features Include:

- Outdoor Swimming Pool, Sauna & Hot Tub
- Underground Parking
- Propane Fireplaces
- Ski Storage Room off Lobby
- Convenient Location to Amenities
- Mountain / Strathcona Park Views

111 3 Bedroom facing Strath. Park	\$234,900
209 4 Bedroom facing Strath. Park	\$344,900
403 Large 3 Bedroom facing ski runs	\$229,900
405 3 Bed SOLD! ski runs	\$249,900
506 3 Bedroom Penthouse facing Strathcona Park and ski runs	\$264,900



Closest to Alpine Lodge!

3 bedroom townhome in tip top shape! Ski in and Out from this two level home. 3 bedrooms, two bathrooms and plenty of storage. Bright sunny exposure and a location hard to beat. \$275,000

Tahsis, BC



Ocean View!

Tahsis ocean view home with beautiful inlet and garden views from this 3 bedroom, 2 bath executive style home in the up and coming resort town of Tahsis. The 2nd largest lot (1062 sq ft) in Tahsis' most desirable neighborhood with tiered gardens, rock walkways, 2nd cedar deck overlooking ravine, own driveway. Large gourmet kitchen with all appliances. This is a turnkey recreational home complete with ALL furnishings. Tastefully furnished and well maintained, this comfortable home is a unique Tahsis' property. \$289,000

DEER LODGE

AT MT. WASHINGTON

Features Include:

- Slopeside Location • Hot Tub
- Fully Furnished • Caretaker
- Front Desk Service
- Underground Parking

102 2 Bedroom Lock-off facing Strathcona Park	\$225,900
207 2 Bedroom facing ski runs	\$269,900
409 Top floor, 2 Bedroom Lock-off facing ski runs	\$269,900



Family Wanted!

Affordability is the key with this inexpensive chalet located in the Alpine Village of Mount Washington. Very unique design with lots of vaulted ceilings and open cozy plan. Three small bedrooms and very solidly built. The living area is designed to have the Mount Washington rock chimney offer warmth. Hot tub room, loads of storage and more!

\$349,900

Forbidden Plateau



Commercially Zoned Property with a View!

Commercial zoning allows for multiple uses. Chalets, restaurants, cabins, etc. Fabulous 180 degree views of Vancouver Island, Georgia Strait and the mainland mountains. Build your dream mountain retreat next door to Strathcona Park. Hike in the summer and ski in the winter. Year round recreation, only a 30 minute drive to downtown Courtenay on a well maintained road. Hydro available at the lot line. \$399,900



Nestled on a Knoll

Half duplex for sale in the Alpine Village located on a knoll with views of the ski runs. There is also a common area shared with the other side offering a large family room, sauna, laundry, and a totally private separate suite. Buy one side or both.

BUY ONE OR BOTH \$325,000 each



Proven Income Generator!

Over 1900 square feet of townhome living! Easy access to both slopes and parking and loads of natural light in this spacious mountain home. 4 plus bedrooms and incredible living area with vaulted ceilings. Plenty of storage too! Building envelope has been redone.

\$379,900



Rock Faced Fireplaces!

Lovingly maintained chalet on Fosters Place with 3 bedrooms in the main area and a separate 2 bedroom suite down and an unfinished basement too. Each suite features a rock-faced fireplace and is totally finished. The upper suite can accommodate 12 people and the lower level 7. Other features include 2 decks, sauna and storage. Price includes website. **\$535,000**



Perched on a Ridge!

3 bedroom executive townhome with stunning spectacular views of Strathcona Park. The Master suite encompasses the entire top floor and the Living room is vaulted almost up the roof of the entire building. Common area includes, hot tub on it's own private deck and sauna. What more to say than "WOW!"

\$499,900



Parkview Place End Unit!

Located near the loading area of the Hawk Chairlift this unit has 3 bedrooms and 2,400 sq. ft.! Very spacious floorplan with 3 levels. Main floor features a large open kitchen and living areas, 2 bathrooms and laundry facilities. Upper level features 4 bedrooms and a bathroom. Bottom level is a double garage with loads of storage space.

\$449,900



Ocean View!

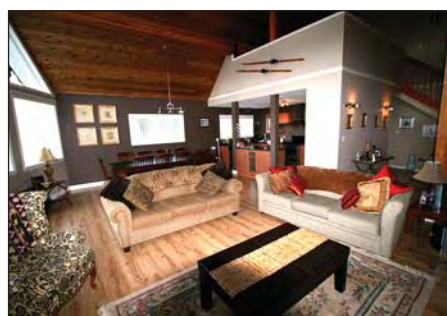
You can see the ocean from this chalet located in the Alpine Village of Mount Washington. On 3 levels, the lower level is a self contained suite whilst the upper 2 floors have spacious rooms and an open plan. Sauna on the main floor with huge living area. Close to parking and loads of morning sun!

\$525,000

A Sought After Property...

in a sought after location! Lovingly maintained by its owners "Chalet 43" offers a 4 bedroom main suite on the upper two floors and a self contained two bedroom suite on the lower floor. The main suite is open and design with many recent upgrades from the ground up including flooring, doors and plumbing. Very well thought out design offering fantastic accommodation and a floor plan "that works!" Two bathrooms, one with a gorgeous jetted tub. The lower 2 bedroom suite is spacious and cozy with 2 bedrooms and large living/kitchen area. A shared sauna and ample storage rounds out the package. Chalet 43 is located close to parking yet EASY access to the slopes. Tucked into the side-hills, it is close to everything yet sitting on the large deck you are hidden in the woods.

\$599,900



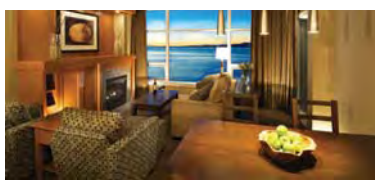
In a word... Stunning!

Located on the upper side of Fosters Place on Mount Washington is this STUNNING mountain chalet. 4+ bedrooms and a HUGE living area! This mountain home boasts a beautifully appointed interior finished to the highest of standards. Ski in and out access and close to Strathcona Park for nordic skiing in winter and summer hiking. Golf courses, beaches, international airport all just 30 minutes away.

\$599,900

BEACHFRONT LUXURY

FROM
\$99*



THE BEACH CLUB RESORT

PARKVILLE • VANCOUVER ISLAND

Experience the newest luxury resort on Vancouver Island this winter with The Beach Club Resort's Winter Getaway Special. Rates starting at \$99 with complimentary shuttle services from Mount Washington Alpine Resort

For reservations call 250-248-8999
or 1-888-760-2008 or visit our website
www.beachclubbc.com

* Based on availability



BEAR LODGE

at Mount Washington

Only
14 Left!

1, 2 & 3 BEDROOMS FROM \$209,900

- Fully furnished
- Rain Screen Technology
- Slopeside access



Builder's Own Home!

Located in Nordic Heights adjacent to Strathcona Park! Interior finished with loads of wood and windows to take advantage of light and to create a cozy warm feel. Easy access to ski slopes just out the back. Where else can you purchase a gorgeous home in an alpine setting! Three large bedrooms, open living area, large sauna, loads of storage & inviting architecture. Enjoy "The Strathcona Mountain House".



2 Separate Owner Suites!

A very unique property in the Alpine Village. Only 14 years old, this spectacular property is perched to take in the sunset views of Strathcona Park, yet virtually ski in and out and close to parking. 14 foot ceilings, open plans, 2 separate owner suites plus self-contained suite in the basement. Sauna, loads of storage and more. **\$699,900**



2700 Square Feet of Luxury!

Never before has a home of this style and quality been available on the Mount Washington market. Over 2,700 square feet with 6 bedrooms and 4 bathrooms. No expense has been spared from the silestone quartz kitchen, hardwood floors, solid cedar beams, log styled exterior to the open hearth style gas fireplace. All rooms are open and spacious. Fosters Place is Mount Washington's only drive-in, ski-out location. If you have been looking for the "something special", this is the one. **\$799,900**



Large Custom Built Log Home!

Looking for a large property on Mount Washington? This log home on Fosters Place offers ski-in, ski-out access and can be partitioned off to be anywhere from a 2 bedroom suite to 11 bedrooms. Home includes 4 separate living areas complete with kitchens, 4 large decks, hot tubs, sauna, and a fantastic location. Property can be rented to 4 different groups. **\$829,900**

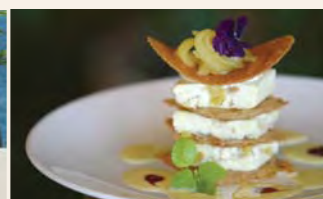


Contact: Rick Gibson, Royal LePage in the Comox Valley Ph: 250-334-3124 (24 hrs) Direct: 250-338-1723 www.rickgibson.ca



KINGFISHER

Oceanside Resort & Spa



Oceanfront Spa Resort with Awe-inspiring Views

World class spa... situated on the ocean's edge, offering spa therapies focusing on the rich ingredients of the sea and interpreted to reflect our unique West Coast environment.

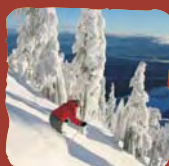
Gourmet Restaurant Voted Top 20 in BC

Casual fine dining featuring fresh local ingredients including seafood and organic vegetables from Comox Valley farmers, complimented by fresh herbs and vegetables from our own gardens.

Warm Hospitality. Exceptional Service.



One SUITE Deal!



STAY, SKI
AND SPA **\$159***
Per Person

Package includes one night accommodation in a deluxe studio, one adult lift pass at Mount Washington Ski Resort and one ½ hour massage in our NEW 4500 sq/ft OH Spa Opening Dec 1st, 2008



*Package based on double occupancy,
Valid Dec 01, 08 to Dec 21, 08 and Jan 01, 09 to April 13, 09

(250) 703-0202 • 1-888-703-0202

www.oldhousevillage.com

Believing in & Supporting OUR FUTURE OLYMPIANS

As a Major Sponsor of the Vancouver Island Mountain Sports Society, Rick Gibson supports the following clubs and believes in the dream of bringing Olympic Gold home to Mount Washington.

- Mount Washington Ski Club
- Mount Washington Freestyle Club
- Vancouver Island Riders
- Strathcona Nordics Cross Country Ski Club
- Vancouver Island Society for Adaptive Snow Sports

Why choose Rick Gibson to be your Realtor for your Mount Washington investment plans?

- The Royal LePage website receives over 800,000 visits a per month.
- Rick Gibson's three web sites receive over 8000 unique visits per month.
- The Mount Washington Real Estate Channel shows your property 24/7.
- Royal LePage has four offices in the Comox Valley, including the Comox Valley Airport.
- Rick Gibson resides on Mount Washington and has over 20 years experience promoting and selling on Mount Washington.
- The Mount Washington Marmot newspaper boasts an annual circulation of 80,000 copies.

MileHigh.ca

ROYAL LEPAGE
In the Comox Valley



Rick Gibson 250-338-1723 (Direct)
www.rickgibson.ca • www.milehigh.ca



Flights Daily

to the friendliest airport in Canada!

Voted #1 for Customer Service for the past four years.

- Ideal starting point for your Island Getaway
- Modern facilities with big city services and small town hospitality
- Serviced by WestJet, Pacific Coastal & Central Mountain Air
- Numerous daily flights through Vancouver, Calgary & Edmonton

YOUR VANCOUVER ISLAND GATEWAY
COMOX VALLEY
airport

Pacific Coastal.com

www.comoxairport.com